

**For Sale  
Commercial Land  
Center Drive, Buffalo 55313**

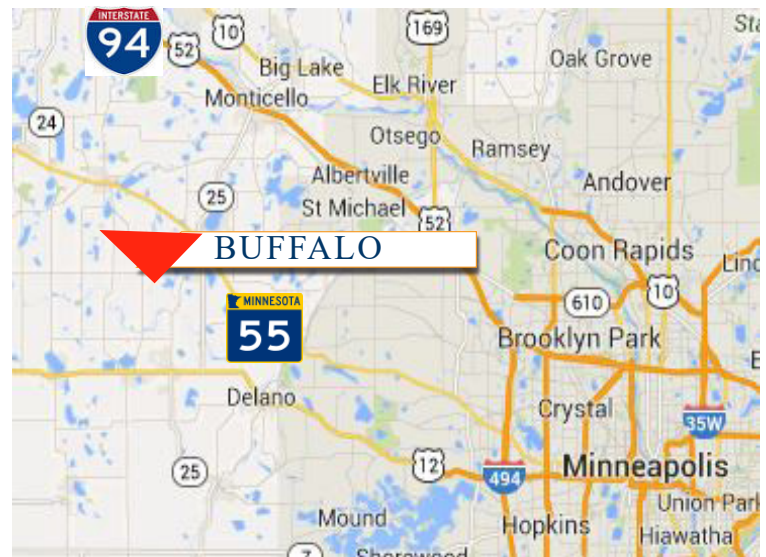
**PRICE REDUCED**

**Great  
Office Location!**



**PROPERTY INFORMATION**

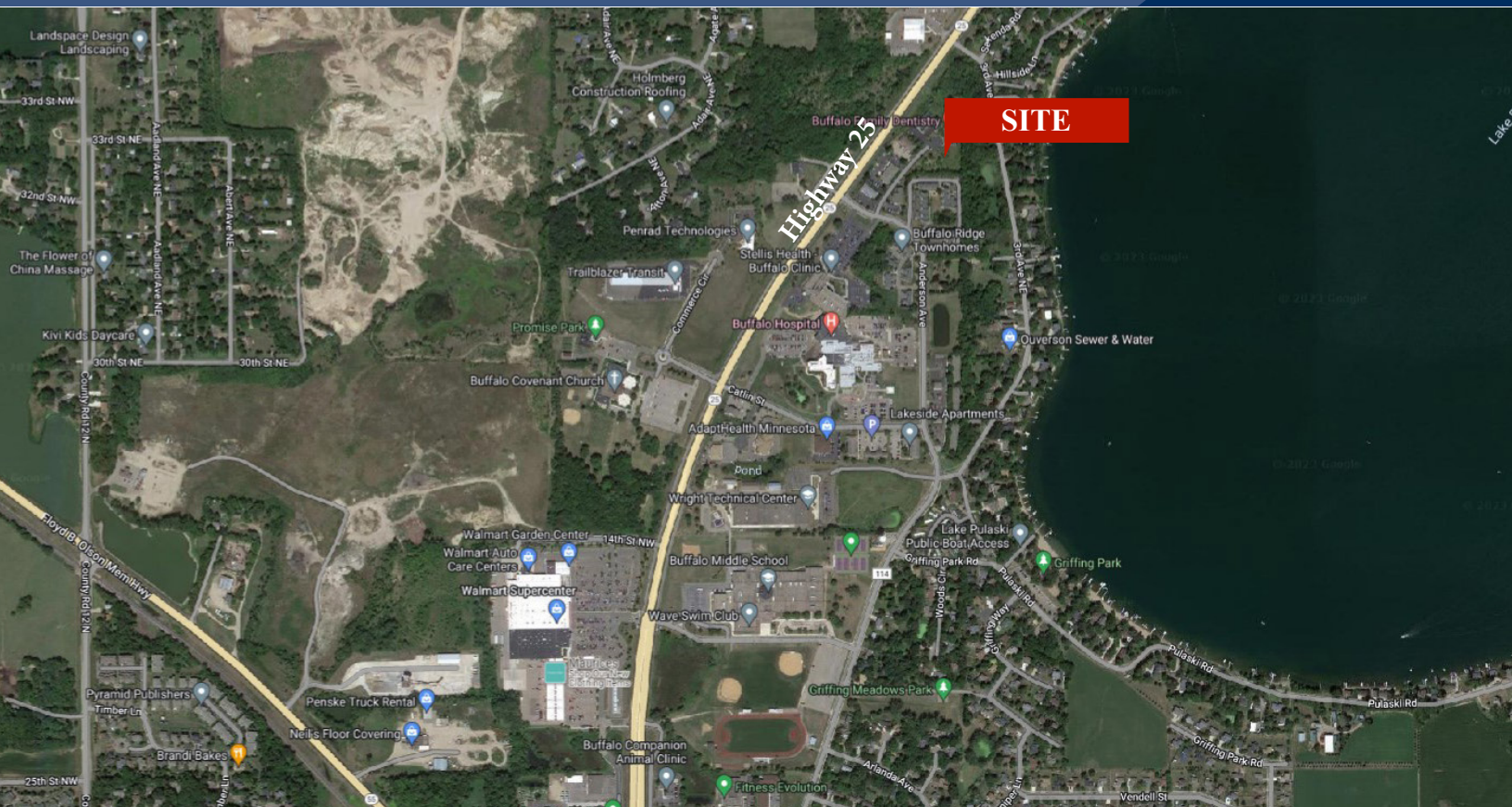
- \* Sales Price **\$129,000.00**  
Reduced to **\$80,000.00**
- \* Available 23,087/sf (.53 Acres)
- \* Wright County PID 103.188.001080
- \* 2025 Taxes \$2,008.00
- \* Located in Pulaski Professional Park
- \* Zoned: B-6 Health Care Facility or General Office
- \* Businesses in the Area Include:  
Pen Rad, WalMart, Sportsman Dream Financial,  
Reliable Medical Supply, Buffalo Eye Clinic,  
Buffalo Family Dentistry, Dunn Bros, Dollar Tree,  
Buffalo Clinic and Hospital, and more!



**Contact:**  
**WAYNE ELAM**  
**(763) 229-4982**  
**WElam@crs-mn.com**

**3 Highway 55 West, Buffalo, MN 55313-4320 | 763-682-2400 | info@crs-mn.com**

# For Sale Commercial Land Center Drive, Buffalo 55313



## LOCATION INFORMATION

- \* Located on the East side of Highway 25
- \* Businesses in Pulaski Professional Park:
  - \* Insurance Office
  - \* Law Offices
  - \* Medical Supply
  - \* Buffalo Hospital Sleep Center
  - \* Foot and Ankle Clinic
  - \* Family Dentistry Clinic
  - \* Buffalo Clinic
  - \* Investment Counselors



## TRAFFIC COUNTS - 2023

- \* Highway 25 - 19,200 VPD
- \* Highway 55 - 18,000 VPD

**Contact:**  
**WAYNE ELAM**  
**(763) 229-4982**  
**WElam@crs-mn.com**

3 Highway 55 West, Buffalo, MN 55313-4320 | 763-682-2400 | info@crs-mn.com