

For Sale/Lease Commercial/Industrial Building xxx Dundas Rd, Monticello 55362

LEASE RATE \$11.50/psf



PROPERTY INFORMATION

- * Lease Rate **\$11.50/psf NET**
 - Spaces Available For Sale or For Lease
 - A-2 2,325/sf \$322,595.00
 - F-2 3,488/sf \$499,000.00 (For Sale Only)
- * Office 18' x 20' w/Mezzanine
(Includes Office, Bathroom & Warehouse Space)
- * Zoning is I-2 Heavy Industrial
- * Wright County
- * Near Restaurants and Major Retailers



Contact:
WAYNE ELAM
(763) 229-4982
WElam@crs-mn.com

3 Highway 55 West, Buffalo, MN 55313-4320 | 763-682-2400 | info@crs-mn.com



COMMERCIAL REALTY SOLUTIONS

For Sale/Lease Commercial/Industrial Building xxx Dundas Rd, Monticello 55362



PROPERTY INFORMATION

- * Quick and Easy Access to I-94 and Highway 25
- * Major retailers in the area include Super Target, Home Depot, Cub Foods, FleetFarm, Wal-Mart SuperCenter, Caribou, Kwik Trip and much more retail and other services . . .
- * City fiber optics networking providing high-speed internet, telephone and cable
- * City Incentives for Job Creation

TRAFFIC COUNTS - 2024

- * Highway 25 - 26,000 VPD
- * I-94 - 56,000 VPD

Contact:

WAYNE ELAM

(763) 229-4982

WElam@crs-mn.com

3 Highway 55 West, Buffalo, MN 55313-4320 | 763-682-2400 | info@crs-mn.com

The information contained herein was obtained from sources believed to be reliable, but Commercial Realty Solutions has not verified nor has any knowledge regarding the accuracy of information and makes no representation or warranty concerning the same. Therefore, Commercial Realty Solutions disclaims all liabilities in connection with any inaccuracies or incompleteness. This marketing material is for the implicit use by Commercial Realty Solutions for the marketing of their listings and is not for use by other brokerage(s).



COMMERCIAL REALTY SOLUTIONS

For Sale/Lease Commercial/Industrial Building xxx Dundas Rd, Monticello 55362

Buildings as shown, size can vary.

PROPERTY INFORMATION

* Building A:

A-1 2,325/sf **Leased**

A-2 2,325/sf **Available Sale/Lease**

A-3 2,325/sf **Leased**

* Building C:

C-1 **Leased**

C-2 **Leased**

C-3 2,325/sf **Under Contract**

* Building D:

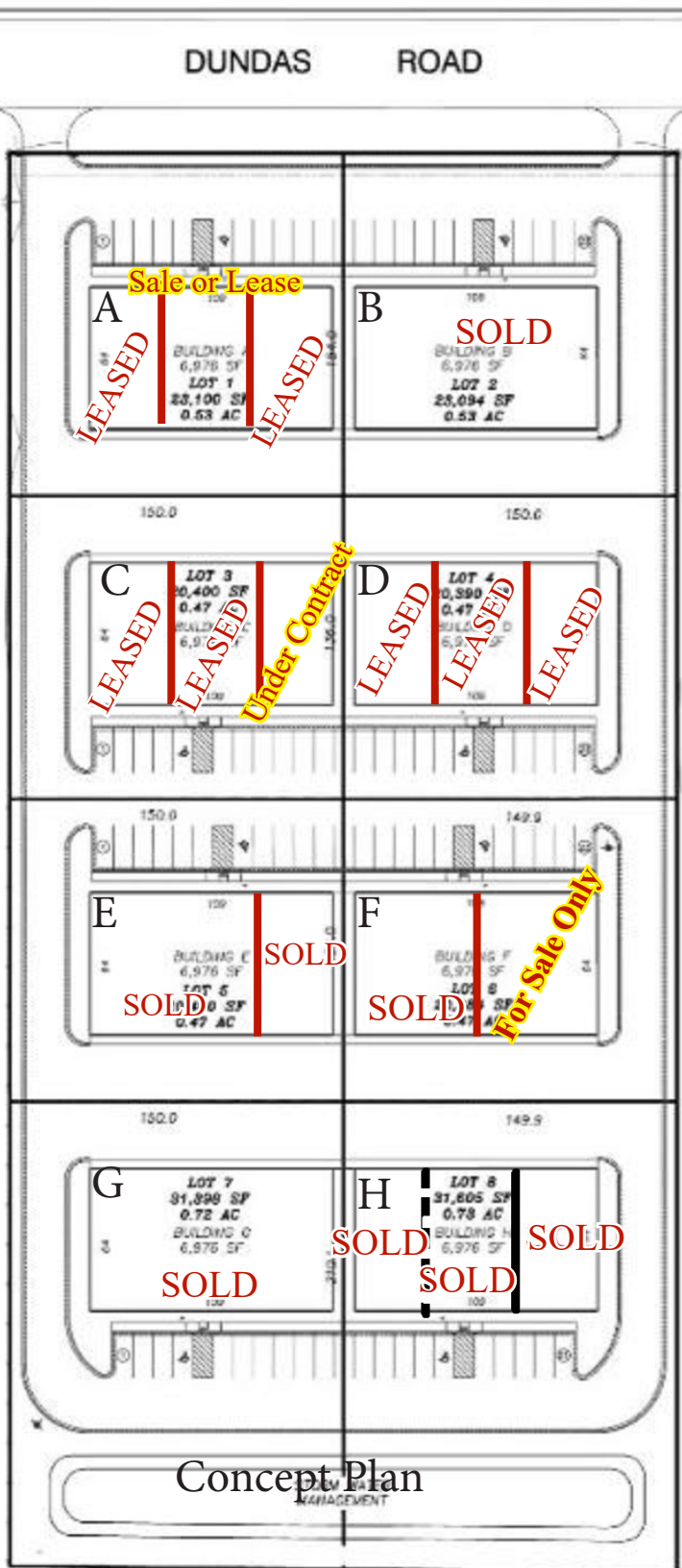
D-1 **Leased**

D-2 **Leased**

D-3 **Leased**

* Building F:

F-2 3,488/sf **Available for Sale Only**



Contact:

WAYNE ELAM

(763) 229-4982

WElam@crs-mn.com

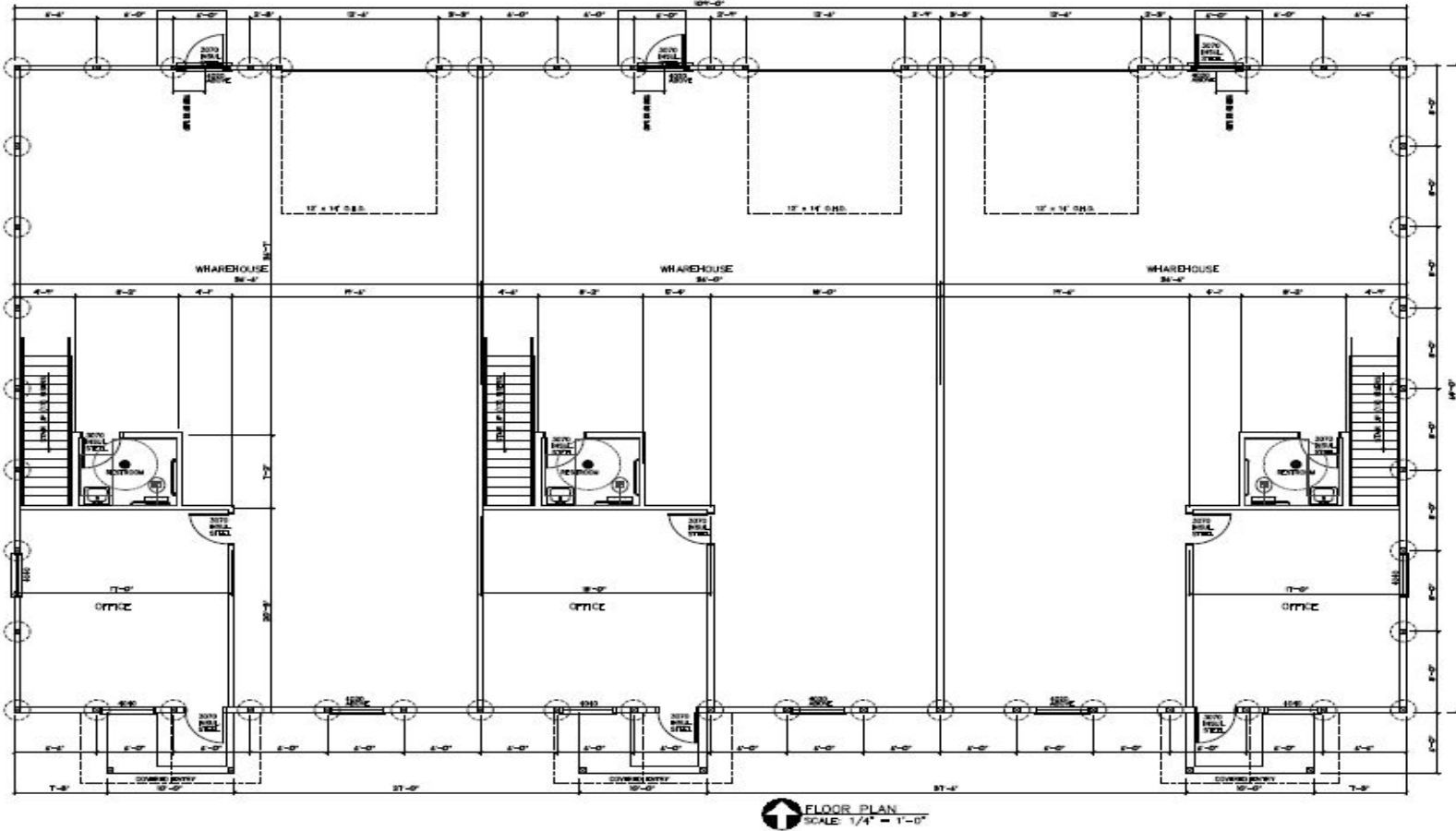
3 Highway 55 West, Buffalo, MN 55313-4320 | 763-682-2400 | info@crs-mn.com

The information contained herein was obtained from sources believed to be reliable, but Commercial Realty Solutions has not verified nor has any knowledge regarding the accuracy of information and makes no representation or warranty concerning the same. Therefore, Commercial Realty Solutions disclaims all liabilities in connection with any inaccuracies or incompleteness. This marketing material is for the implicit use by Commercial Realty Solutions for the marketing of their listings and is not for use by other brokerage(s).



COMMERCIAL REALTY SOLUTIONS

For Sale/Lease Commercial/Industrial Building xxx Dundas Rd, Monticello 55362



Concept Floorplan

PROPERTY INFORMATION

- * Space for Lease: 2,325/sf
- * 5" Concrete Floor
- * 18' x 20' Office Space w/mezzanine
- * Fully Insulated
- * Interior White Steel Lined
- * Unit Heaters
- * 14' Overhead Doors
- * Floor Drains with flammable waste trap included in each space
- * Utilities metered separately
- * Great for Office, Warehouse, Industrial, Storage or MANCAVE
- * Fully Air Conditioned

Contact:
WAYNE ELAM
(763) 229-4982
WElam@crs-mn.com

3 Highway 55 West, Buffalo, MN 55313-4320 | 763-682-2400 | info@crs-mn.com

The information contained herein was obtained from sources believed to be reliable, but Commercial Realty Solutions has not verified nor has any knowledge regarding the accuracy of information and makes no representation or warranty concerning the same. Therefore, Commercial Realty Solutions disclaims all liabilities in connection with any inaccuracies or incompleteness. This marketing material is for the implicit use by Commercial Realty Solutions for the marketing of their listings and is not for use by other brokerage(s).



COMMERCIAL REALTY SOLUTIONS

For Sale/Lease Commercial/Industrial Building xxx Dundas Rd, Monticello 55362



(Example of Build-Out)

**2,325/sf
Fully Built-Out**

**Contact:
WAYNE ELAM
(763) 229-4982
WElam@crs-mn.com**

3 Highway 55 West, Buffalo, MN 55313-4320 | 763-682-2400 | info@crs-mn.com

The information contained herein was obtained from sources believed to be reliable, but Commercial Realty Solutions has not verified nor has any knowledge regarding the accuracy of information and makes no representation or warranty concerning the same. Therefore, Commercial Realty Solutions disclaims all liabilities in connection with any inaccuracies or incompleteness. This marketing material is for the implicit use by Commercial Realty Solutions for the marketing of their listings and is not for use by other brokerage(s).



COMMERCIAL REALTY SOLUTIONS

For Sale/Lease Commercial/Industrial Building xxx Dundas Rd, Monticello 55362



**REAR VIEW with
12' x 14' Overhead Doors**

Contact:
WAYNE ELAM
(763) 229-4982
WElam@crs-mn.com

3 Highway 55 West, Buffalo, MN 55313-4320 | 763-682-2400 | info@crs-mn.com

The information contained herein was obtained from sources believed to be reliable, but Commercial Realty Solutions has not verified nor has any knowledge regarding the accuracy of information and makes no representation or warranty concerning the same. Therefore, Commercial Realty Solutions disclaims all liabilities in connection with any inaccuracies or incompleteness. This marketing material is for the implicit use by Commercial Realty Solutions for the marketing of their listings and is not for use by other brokerage(s).