

**Albertville
Industrial Park!**



PROPERTY INFORMATION

- * Sales Price **\$60,000.00**/per acre
- * 14.33 Acres
(There is an additional 2.46 Acres Available)
- * Wright County
- * PID 101-150-000020 2023 Taxes \$696.00
- * Zoned: I-1 Future Industrial
- * Following items have been completed:
 - Parcel Survey
 - Wetland Delineation
 - Storm Water (Credit)
 - Ditch Clean Out
- * Businesses in the Area Include:
 - Fehn Companies, Mold Tech, Old Castle Glass,
 - Border States Electric, American Engineering
 - Testing, Fraser Steel Co. and more . . .



Contact:
SHEILA ZACHMAN
(763) 244-0600
SZachman@crs-mn.com

3 Highway 55 West, Buffalo, MN 55313-4320 | 763-682-2400 | info@crs-mn.com

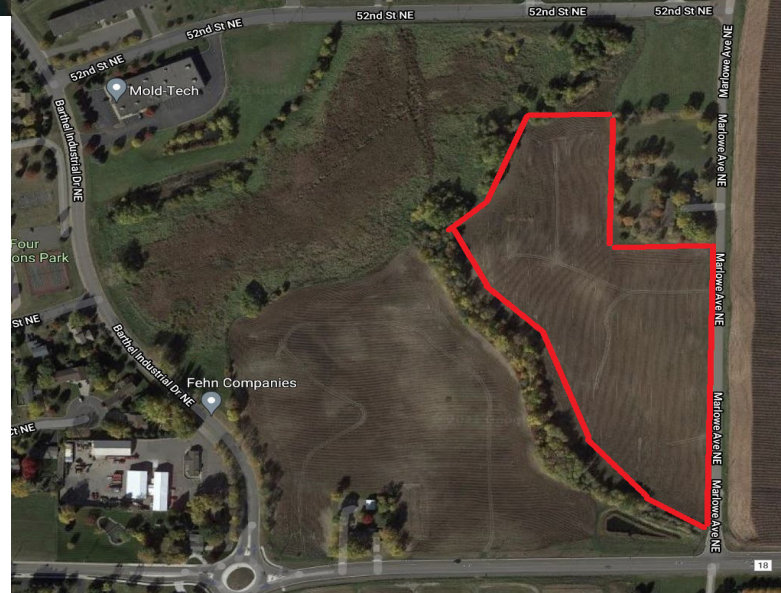


For Sale Industrial Land xxx 50th Street, Albertville 55301



PROPERTY INFORMATION

- * Located on South side of I-94
- * East of Labeau/C.R. 19
- * Easy Access to Interstate



TRAFFIC COUNTS - 2022

- * I-94 - 64,000 VPD
- * 50th Street - 4,150 VPD

Contact:
SHEILA ZACHMAN
(763) 244-0600
SZachman@crs-mn.com

3 Highway 55 West, Buffalo, MN 55313-4320 | 763-682-2400 | info@crs-mn.com

The information contained herein was obtained from sources believed to be reliable, but Commercial Realty Solutions has not verified nor has any knowledge regarding the accuracy of information and makes no representation or warranty concerning the same. Therefore, Commercial Realty Solutions disclaims all liabilities in connection with any inaccuracies or incompleteness. This marketing material is for the implicit use by Commercial Realty Solutions for the marketing of their listings and is not for use by other brokerage(s).