

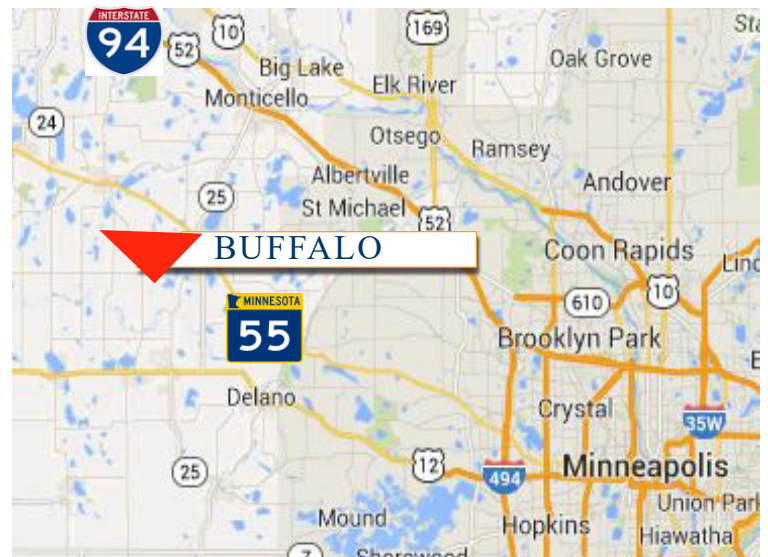
PRICE REDUCED

**Great
Office Location!**



PROPERTY INFORMATION

- * Sales Price ~~\$129,000.00~~
Reduced to **\$80,000.00**
- * Available 23,087/sf (.53 Acres)
- * Wright County PID 103.188.001080
- * 2024 Taxes \$1,726.00
- * Located in Pulaski Professional Park
- * Zoned: B-6 Health Care Facility or General Office
- * Businesses in the Area Include:
Pen Rad, WalMart, Sportsman Dream Financial,
Reliable Medical Supply, Buffalo Eye Clinic,
Buffalo Family Dentistry, Dunn Bros, Dollar Tree,
Buffalo Clinic and Hospital, and more!



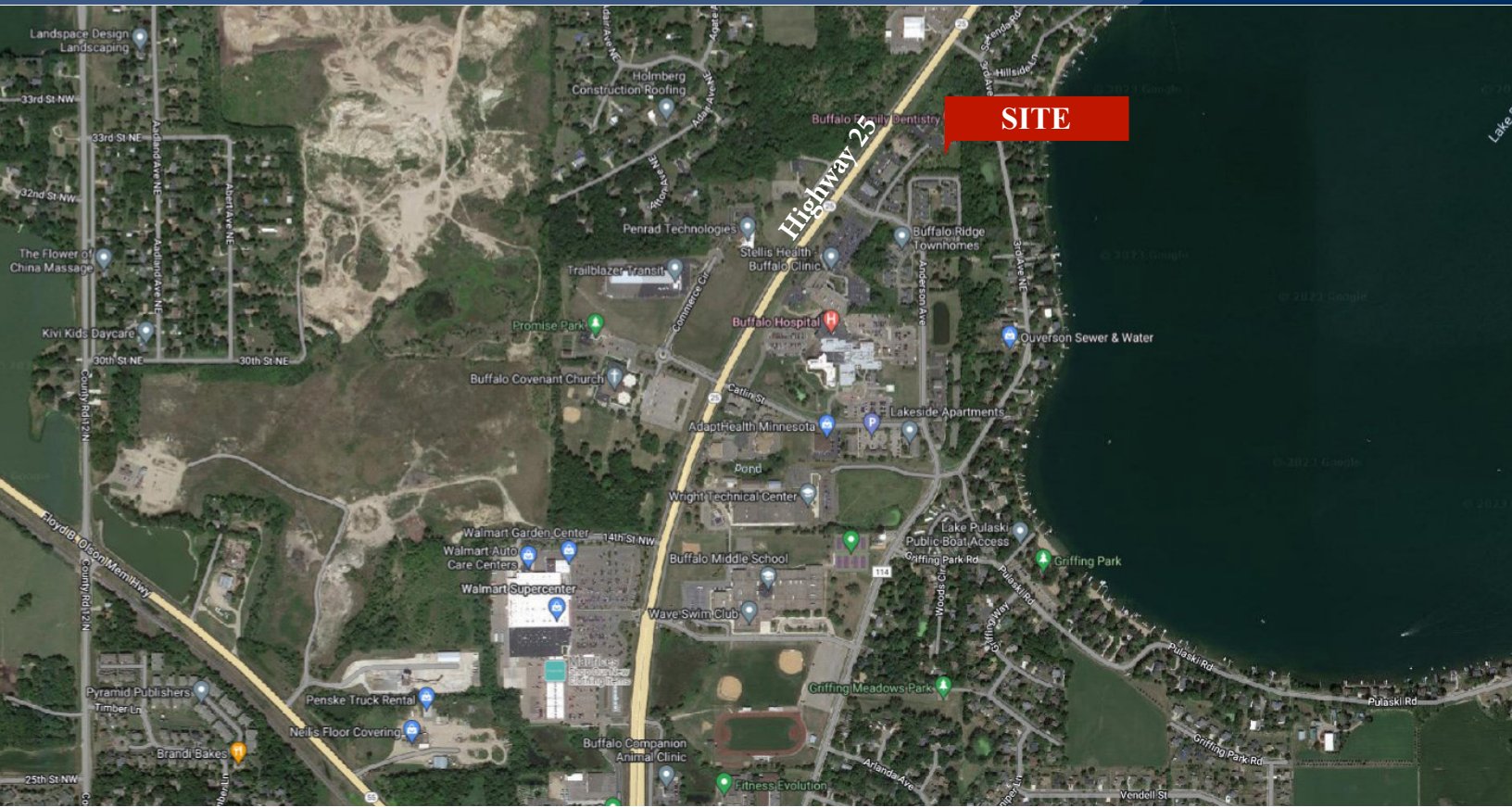
Contact:
WAYNE ELAM
(763) 229-4982
WElam@crs-mn.com

3 Highway 55 West, Buffalo, MN 55313-4320 | 763-682-2400 | info@crs-mn.com



COMMERCIAL REALTY SOLUTIONS

For Sale Commercial Land Center Drive, Buffalo 55313



LOCATION INFORMATION

- * Located on the East side of Highway 25
- * Businesses in Pulaski Professional Park:
 - * Insurance Office
 - * Law Offices
 - * Medical Supply
 - * Buffalo Hospital Sleep Center
 - * Foot and Ankle Clinic
 - * Family Dentistry Clinic
 - * Buffalo Clinic
 - * Investment Counselors



TRAFFIC COUNTS - 2023

- * Highway 25 - 19,200 VPD
- * Highway 55 - 18,000 VPD

Contact:
WAYNE ELAM
(763) 229-4982
WElam@crs-mn.com

3 Highway 55 West, Buffalo, MN 55313-4320 | 763-682-2400 | info@crs-mn.com