

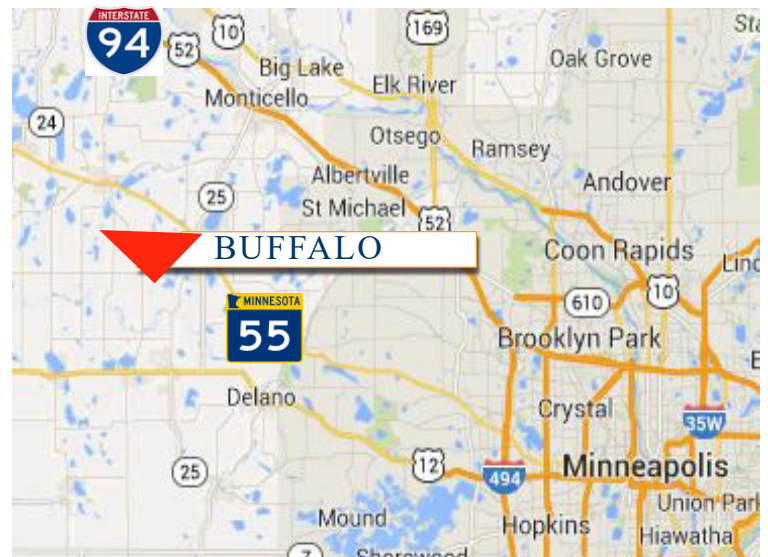
**HUGE PRICE
REDUCTION**

**Great
Office Location!**



PROPERTY INFORMATION

- * Sales Price **\$20,000.00**
Reduced from \$120,000.00
- * Reduced for Quick Sale!
- * Available 23,087/sf (.53 Acres)
- * Wright County PID 103.188.001080
- * 2024 Taxes \$1,726.00
- * Located in Pulaski Professional Park
- * Zoned: B-6 Health Care Facility or General Office
- * Businesses in the Area Include:
Pen Rad, WalMart, Sportsman Dream Financial,
Reliable Medical Supply, Buffalo Eye Clinic,
Buffalo Family Dentistry, Dunn Bros, Dollar Tree,
Buffalo Clinic and Hospital, and more!



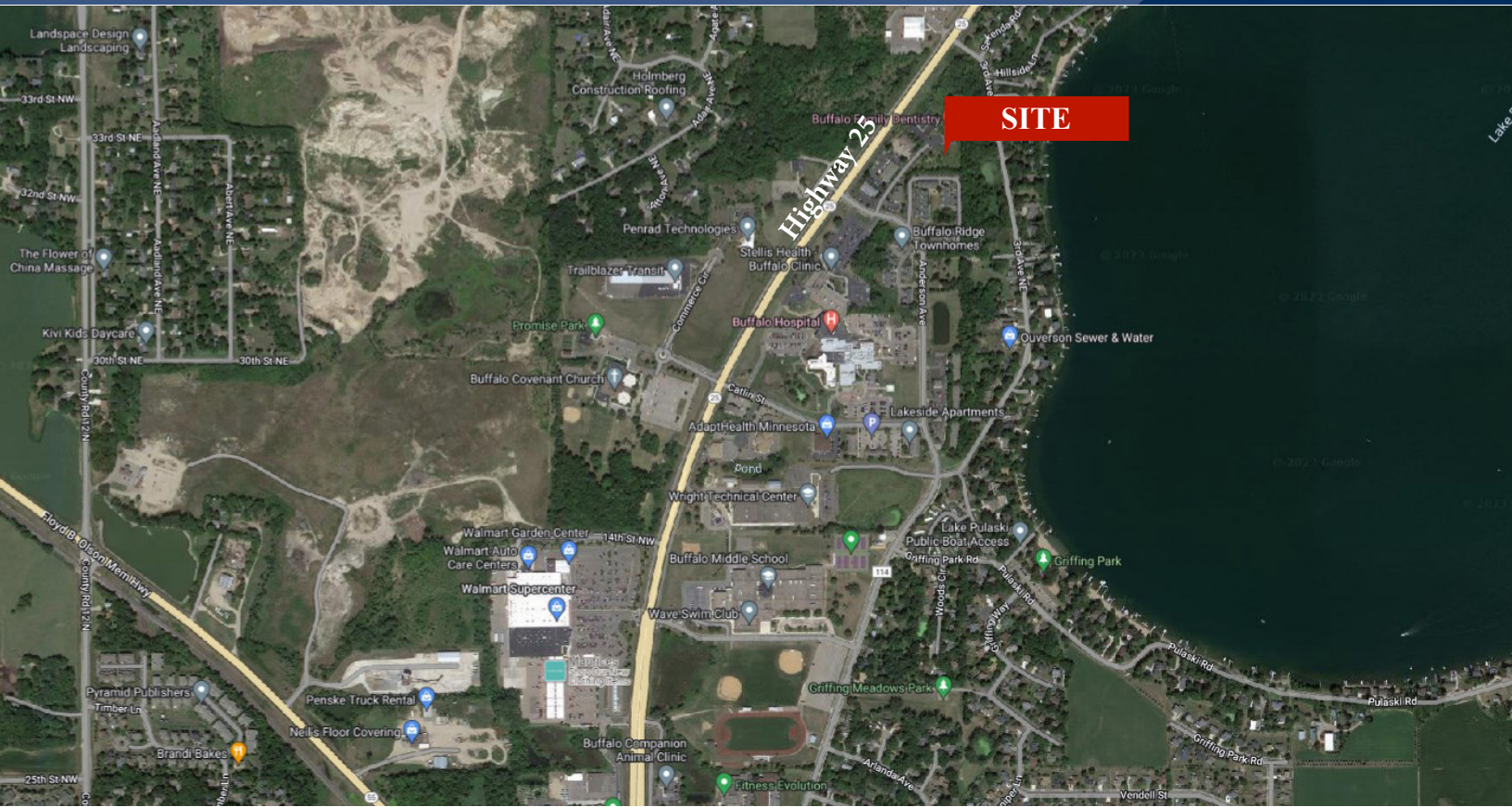
Contact:
WAYNE ELAM
(763) 229-4982
WElam@crs-mn.com

3 Highway 55 West, Buffalo, MN 55313-4320 | 763-682-2400 | info@crs-mn.com



COMMERCIAL REALTY SOLUTIONS

For Sale Commercial Land Center Drive, Buffalo 55313



LOCATION INFORMATION

- * Located on the East side of Highway 25
- * Businesses in Pulaski Professional Park:
 - * Insurance Office
 - * Law Offices
 - * Medical Supply
 - * Buffalo Hospital Sleep Center
 - * Foot and Ankle Clinic
 - * Family Dentistry Clinic
 - * Buffalo Clinic
 - * Investment Counselors



TRAFFIC COUNTS - 2023

- * Highway 25 - 19,200 VPD
- * Highway 55 - 18,000 VPD

Contact:
WAYNE ELAM
(763) 229-4982
WElam@crs-mn.com

3 Highway 55 West, Buffalo, MN 55313-4320 | 763-682-2400 | info@crs-mn.com

The information contained herein was obtained from sources believed to be reliable, but Commercial Realty Solutions has not verified nor has any knowledge regarding the accuracy of information and makes no representation or warranty concerning the same. Therefore, Commercial Realty Solutions disclaims all liabilities in connection with any inaccuracies or incompleteness. This marketing material is for the implicit use by Commercial Realty Solutions for the marketing of their listings and is not for use by other brokerage(s).