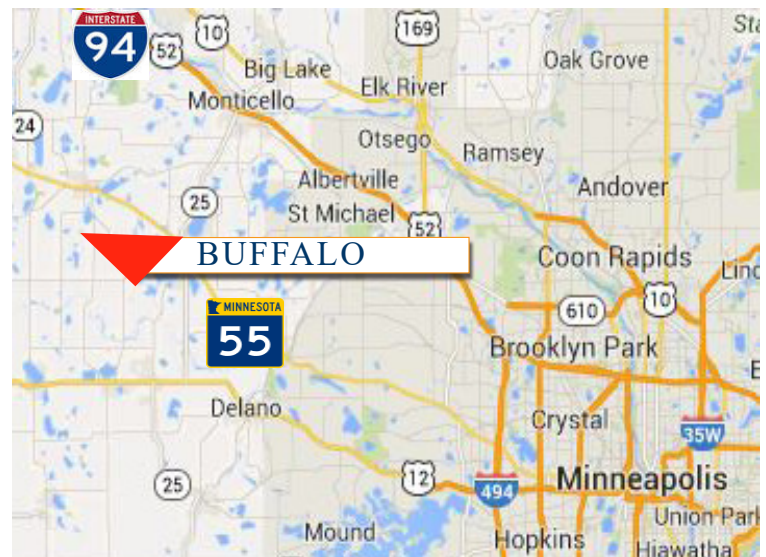




PROPERTY INFORMATION

- * **SALES PRICE \$5.00/PSF**
- * Appx. 10.08 Acres
- * Wright County
- * PID 103-500-324101 (4.59 Acres)
- * 2023 Taxes \$6,800.00
- * PID 103-500-324103 (5.49 Acres)
- * 2023 Taxes \$8,156.00
- * Visibility and access to Highway 55 and County Road 134
- * Across the Street from Menard's & Kwik Trip
- * Excellent Development Opportunity
- * An additional 5 Acres can be added to site.



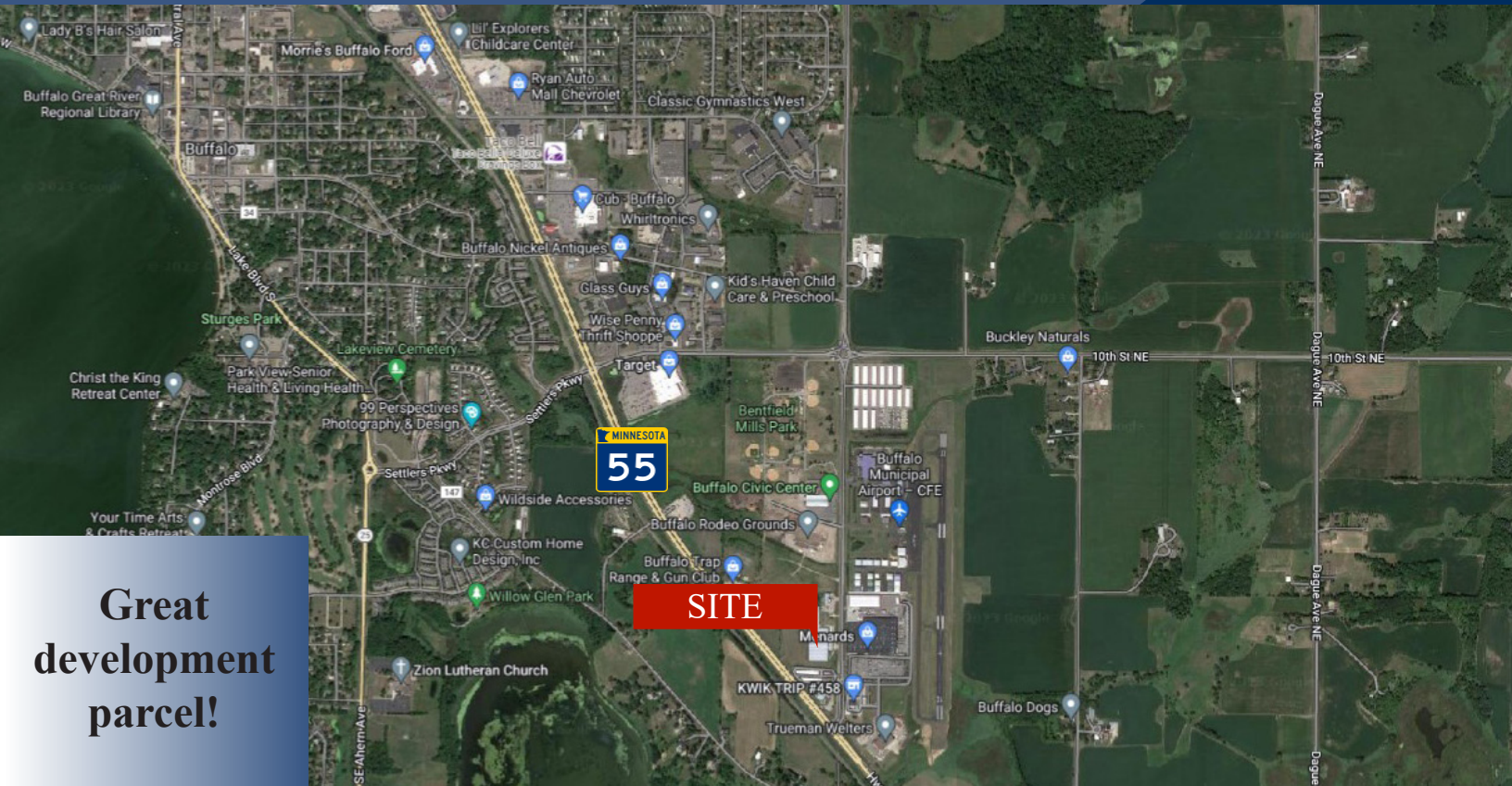
Contact:
WAYNE ELAM
(763) 229-4982
WElam@crs-mn.com

3 Highway 55 West, Buffalo, MN 55313-4320 | 763-682-2400 | info@crs-mn.com



COMMERCIAL REALTY SOLUTIONS

For Sale Commercial Property xxx County Road 134 NE, Buffalo 55313



**Great
development
parcel!**

LOCATION INFORMATION

- * Access to Highway 55 and County Road 134
- * Retailers in the area include Target, Menards, Kwik Trip, Cub Foods, Ryan Auto Mall, Walgreens and Speedway
- * Excellent development location directly across the street from Menards.



TRAFFIC COUNTS - 2022

- * Highway 55 - 17,000 VPD
- * County Road 134 - 3,850 VPD

Contact:
WAYNE ELAM
(763) 229-4982
WElam@crs-mn.com

3 Highway 55 West, Buffalo, MN 55313-4320 | 763-682-2400 | info@crs-mn.com

The information contained herein was obtained from sources believed to be reliable, but Commercial Realty Solutions has not verified nor has any knowledge regarding the accuracy of information and makes no representation or warranty concerning the same. Therefore, Commercial Realty Solutions disclaims all liabilities in connection with any inaccuracies or incompleteness. This marketing material is for the implicit use by Commercial Realty Solutions for the marketing of their listings and is not for use by other brokerage(s).

For Sale
Commercial Property
xxx County Road 134 NE, Buffalo 55313



**Great
development
parcel!**

Contact:
WAYNE ELAM
(763) 229-4982
WElam@crs-mn.com

3 Highway 55 West, Buffalo, MN 55313-4320 | 763-682-2400 | info@crs-mn.com