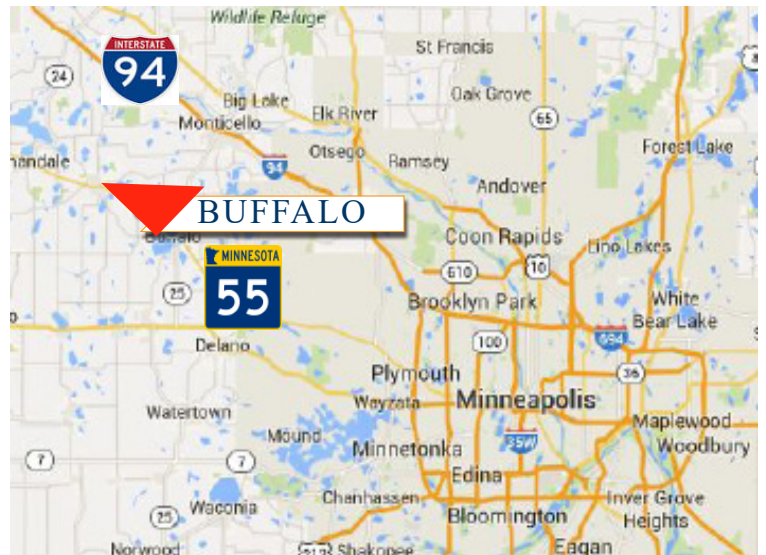




PROPERTY INFORMATION

- * Sales Price **\$1.50/psf**
- * 37 Acres - Divisible
- * Wright County
 - PID 202-000-282100 2021 Taxes \$286.00 (Green Acres)
 - PID 202-000-282300 2021 Taxes \$522.00 (Green Acres)
- * Current Zoning is Agriculture
- * Future Land Use is Commercial
- * Located East of Buffalo High School
- * Businesses in the Area Include:
 Wells Fargo Bank, Buffalo Wine & Spirits, Cub Foods, A&W, Taco Bell, Tires Plus, Culver's, McDonald's, Target, Walmart, and much more

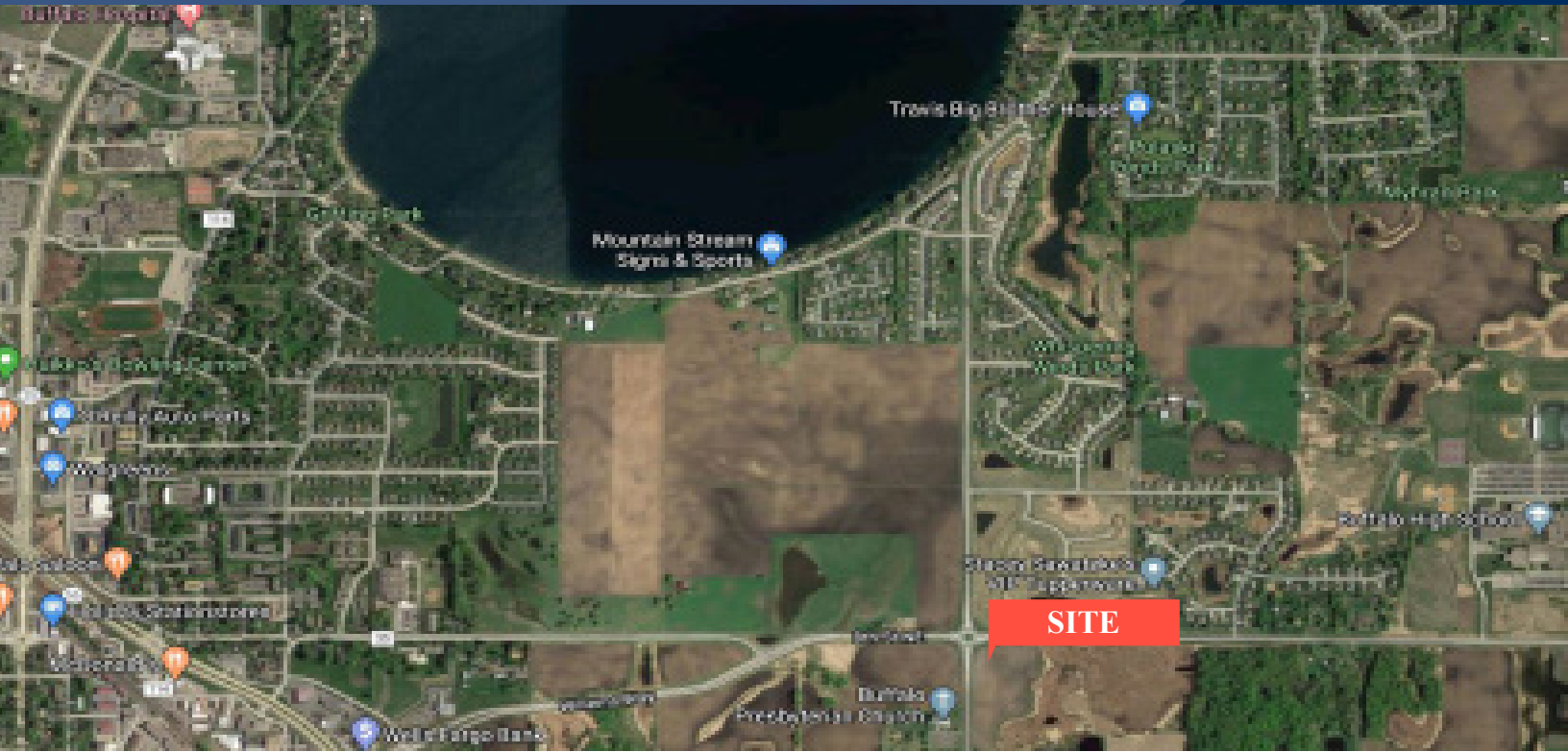


Contact:
WAYNE ELAM
(763) 229-4982
WElam@crs-mn.com



COMMERCIAL REALTY SOLUTIONS

For Sale Commercial/Residential Land County Road 35/134, Buffalo 55313



LOCATION INFORMATION

- * Quick and easy access to Highway 55 and County Road 35
- * Major retailers in the area include Target, Menards, Cub Foods, Walmart and more . . .

TRAFFIC COUNTS - 2018

- * Highway 55 - 18,000 VPD
- * County Road 134 - 2,200 VPD
- * County Road 35 - 3,850 VPD



Contact:

WAYNE ELAM
(763) 229-4982
WElam@crs-mn.com