



COMMERCIAL REALTY SOLUTIONS

For Sale
Industrial
Building

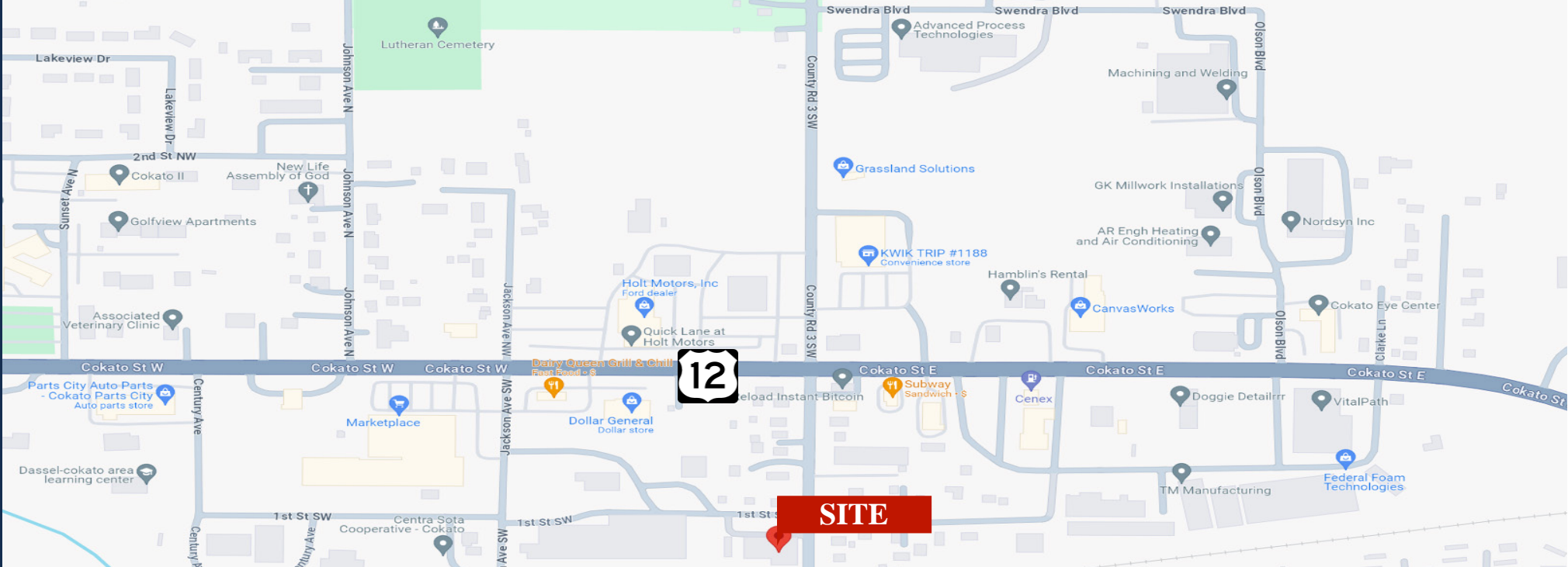


PRICE REDUCED

COKATO Industrial Building

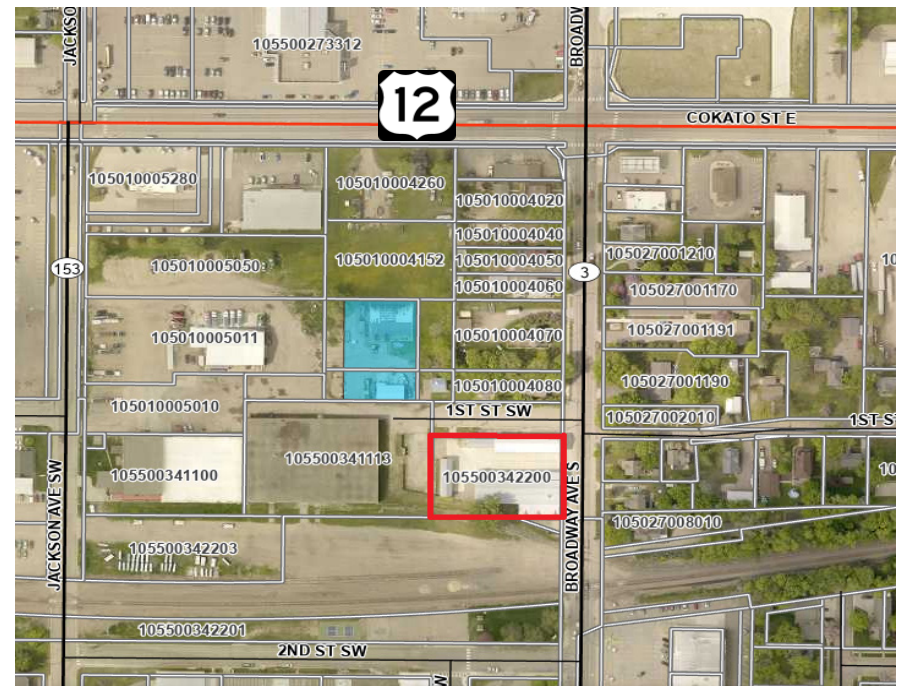
Multiple Buildings - Total 16,388/sf
170 Broadway Avenue S, Cokato, MN 55321

Sheila Zachman, Broker
763.244.0600
SZachman@crs-mn.com



PROPERTY LOCATION

- * South of Highway 12
- * South of Burlington Northern Railroad
- * West of Broadway Avenue South
- * Businesses in the Area:
Stonelake Title, Dassel Cokato Machine,
Advanced Process Technologies,
Vital Path Manufacturing and more.



TRAFFIC COUNTS - 2023

- * Highway 12 - 10,700 VPD
- * Broadway Ave S - 4,600 VPD

The information contained herein was obtained from sources believed to be reliable, but Commercial Realty Solutions has not verified nor has any knowledge regarding the accuracy of information and makes no representation or warranty concerning the same. Therefore, Commercial Realty Solutions disclaims all liabilities in connection with any inaccuracies or incompleteness. This marketing material is for the implicit use by Commercial Realty Solutions for the marketing of their listings and is not for use by other brokerage(s).

PROPERTY OVERVIEW

Sale Price
~~\$460,000.00~~

Reduced to
\$345,000.00

Building Size	16,388/sf Total Main Building - 7,860/sf Office - 3,296/sf Warehouse - 3,120/sf Lean to Shed #1 - 960/sf Lean to Shed #2 - 1,152/sf
Lot Size	0.79 Acres
Wright County	PID 105-500-342200
2024 Taxes	\$8,730.00
Zoned	B-2 Downtown Business
Built	1960

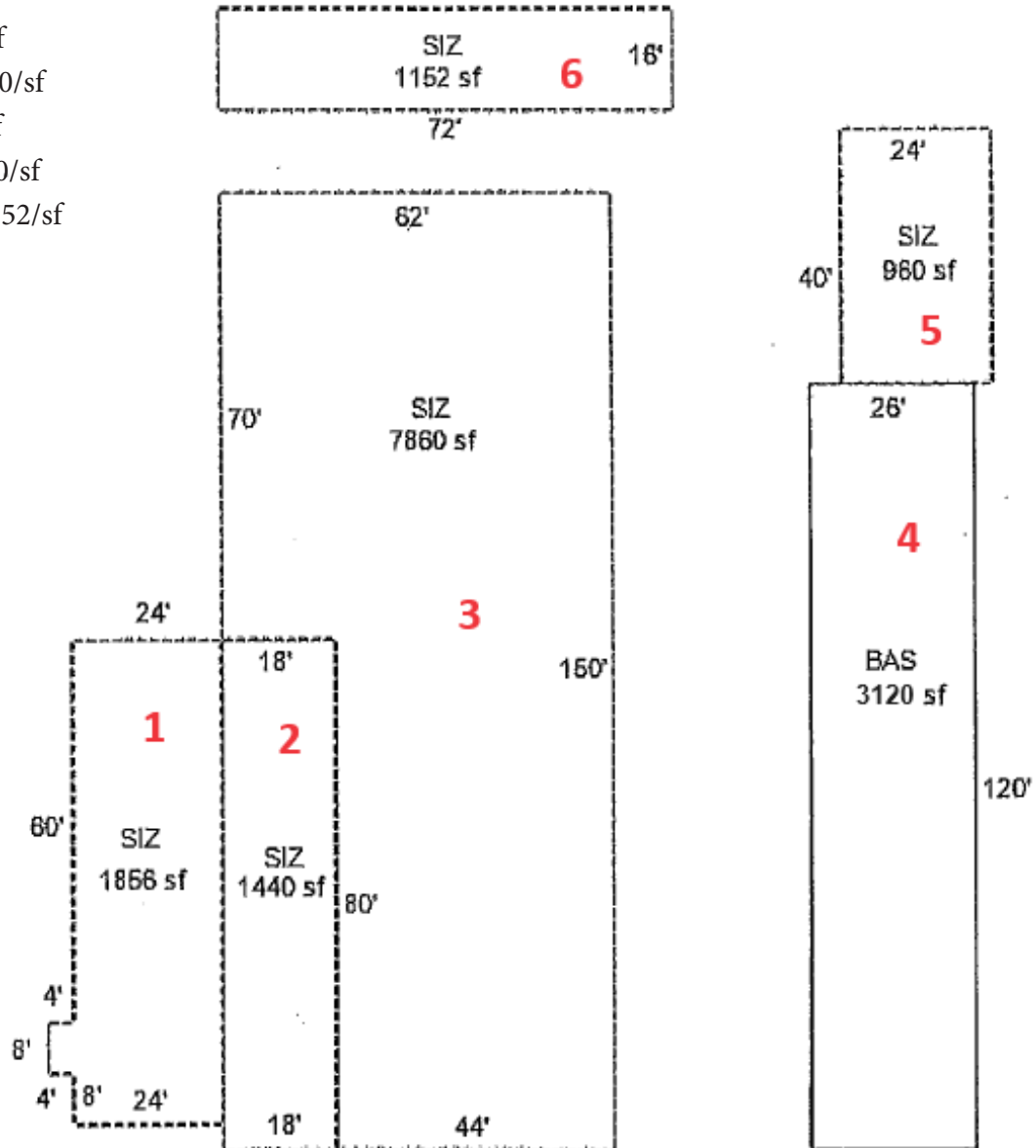
BUILDING OVERVIEW

- * Natural Gas Forced Air A/C (Office Only)
- * Electrical 220 Amps
- * 6 Overhead Doors, 2 with Openers (No Levelers)
- * Clear Height: 24'
- * 2 Parking Spaces plus Street Parking
- * 1 Restroom
- * LED Lights in Warehouse
- * 6 Offices
- * Alarm System

This information has been secured from sources we believe to be reliable, but we make no representations or warranties explained or implied as to the accuracy of the information. Buyer must verify the information and bears all risk for any inaccuracies.

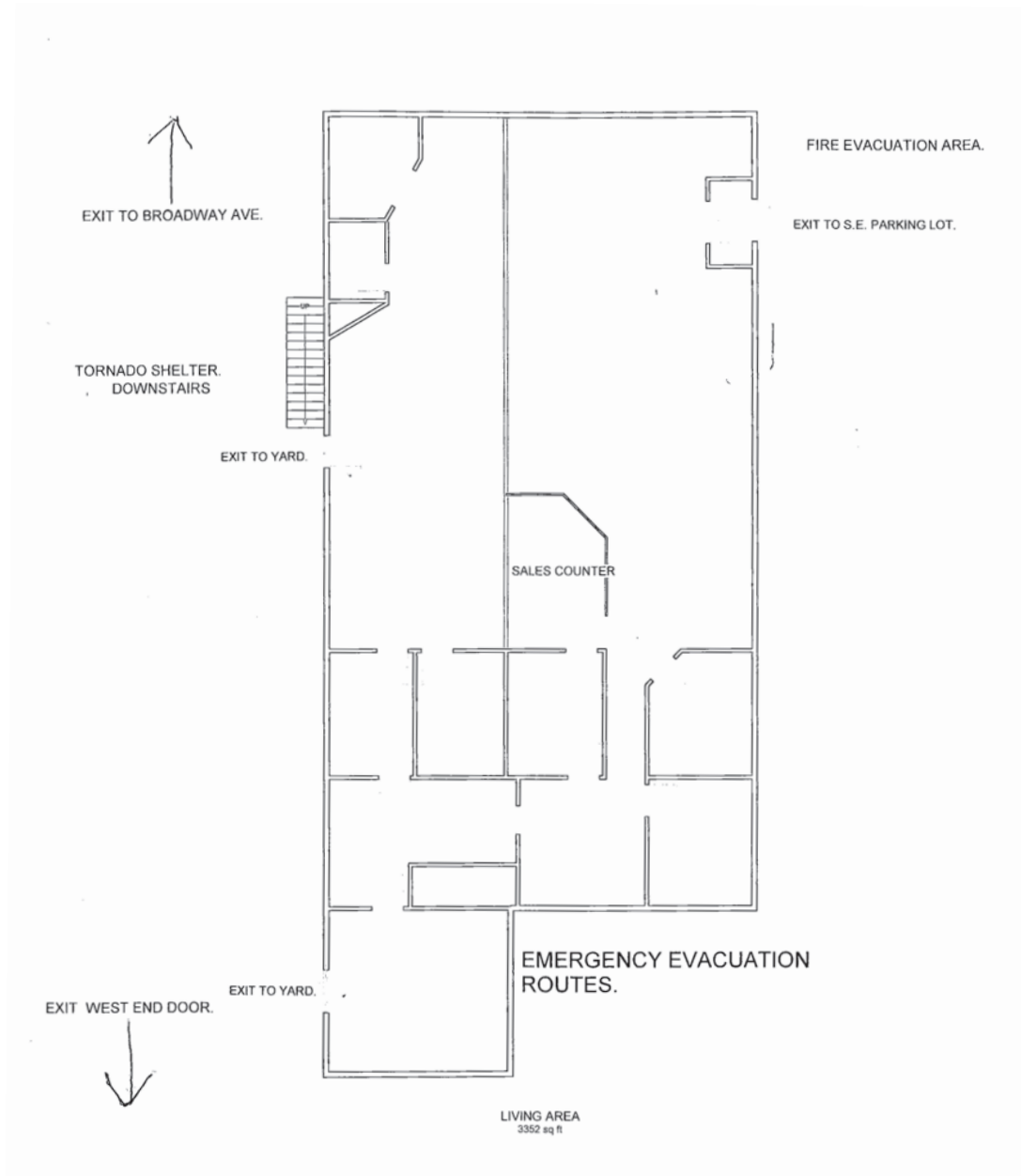
BUILDING NUMBERS

- Office (#1 & #2) 3,296/sf
- Main Building (#3) 7,860/sf
- Warehouse (#4) 3,120/sf
- Lean to Shed #1 (#5) 960/sf
- Lean to Shed #2 (#6) 1,152/sf



This information has been secured from sources we believe to be reliable, but we make no representations or warranties explained or implied as to the accuracy of the information. Buyer must verify the information and bears all risk for any inaccuracies.

OFFICE FLOOR PLAN



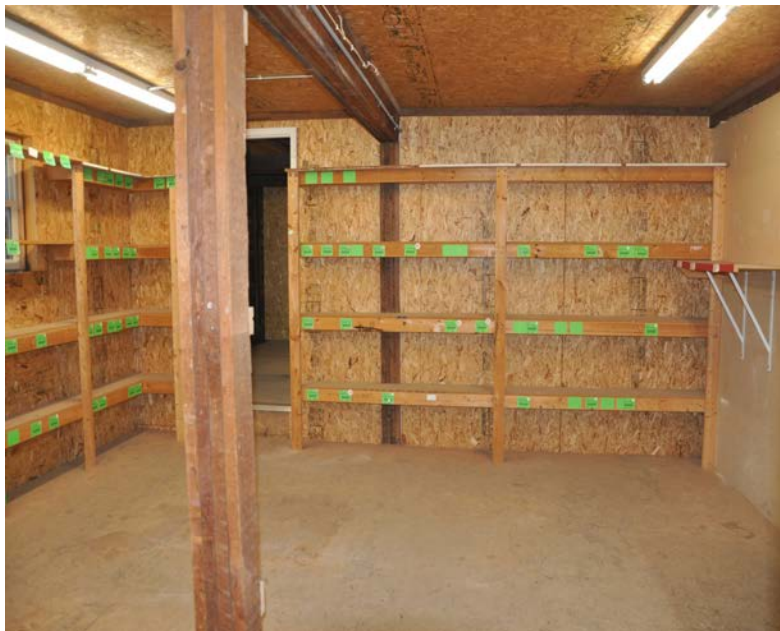
This information has been secured from sources we believe to be reliable, but we make no representations or warranties explained or implied as to the accuracy of the information. Buyer must verify the information and bears all risk for any inaccuracies.

OFFICE (Front)



This information has been secured from sources we believe to be reliable, but we make no representations or warranties explained or implied as to the accuracy of the information. Buyer must verify the information and bears all risk for any inaccuracies.

OFFICE



This information has been secured from sources we believe to be reliable, but we make no representations or warranties explained or implied as to the accuracy of the information. Buyer must verify the information and bears all risk for any inaccuracies.

BUILDING #3: 7,860/sf



This information has been secured from sources we believe to be reliable, but we make no representations or warranties explained or implied as to the accuracy of the information. Buyer must verify the information and bears all risk for any inaccuracies.

BUILDING #4: 3,120/sf



This information has been secured from sources we believe to be reliable, but we make no representations or warranties explained or implied as to the accuracy of the information. Buyer must verify the information and bears all risk for any inaccuracies.

BUILDING #5: 960/sf



This information has been secured from sources we believe to be reliable, but we make no representations or warranties explained or implied as to the accuracy of the information. Buyer must verify the information and bears all risk for any inaccuracies.

BUILDING #6: 1,152/sf



This information has been secured from sources we believe to be reliable, but we make no representations or warranties explained or implied as to the accuracy of the information. Buyer must verify the information and bears all risk for any inaccuracies.

EXTERIOR



BUILDING INFORMATION

- * Security Fence
- * Concrete Between Buildings
- * Post Steel Construction
- * Exterior Lighting

This information has been secured from sources we believe to be reliable, but we make no representations or warranties explained or implied as to the accuracy of the information. Buyer must verify the information and bears all risk for any inaccuracies.