



COMMERCIAL REALTY SOLUTIONS

For Sale
Residential Land



North Diamond Lake Rd

DAYTON RESIDENTIAL DEVELOPMENT LAND

Sales Price: \$20,000.00/Acre

104.85 Acres

xxxxx Diamond Lake, Dayton, MN 55327

Sheila Zachman, Broker
763.244.0600
SZachman@Crs-Mn.com

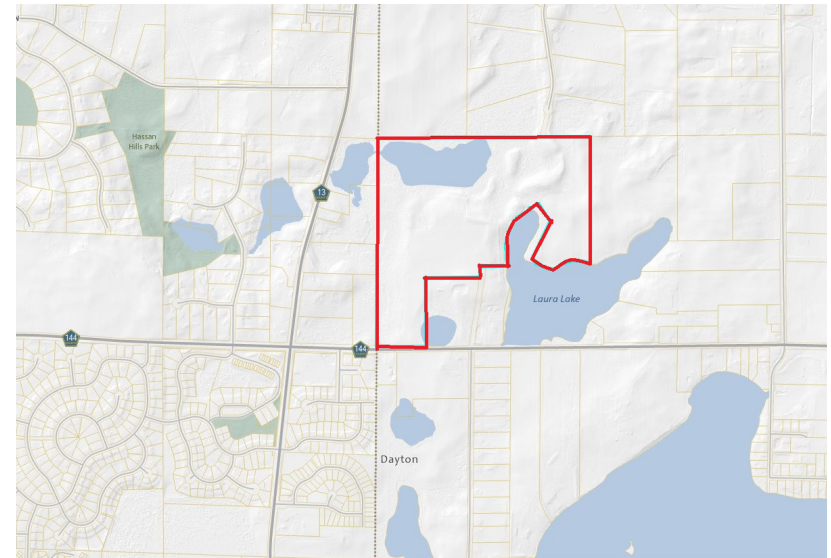


PROPERTY LOCATION

- * East of Highway 101
- * North of Diamond Lake Road

TRAFFIC COUNTS - 2024

- * Diamond Lake Rd - 2,900 VPD
- * Brockton Lane - 2,200 VPD



Businesses in the Area:

Rogers High School, Rogers Middle School, Rogers Activity Center, Cub Foods, HOM Furniture, Lake Laura, Daytona Golf Club, and more.

The information contained herein was obtained from sources believed to be reliable, but Commercial Realty Solutions has not verified nor has any knowledge regarding the accuracy of information and makes no representation or warranty concerning the same. Therefore, Commercial Realty Solutions disclaims all liabilities in connection with any inaccuracies or incompleteness. This marketing material is for the implicit use by Commercial Realty Solutions for the marketing of their listings and is not for use by other brokerage(s).

PROPERTY OVERVIEW

Sales Price
\$20,000.00/Acre

| | |
|-----------------|--|
| Lot Size | 104.85 Acres |
| Hennepin County | 07-120-22-32-0005 |
| Taxes | 2025 \$12,105.80 |
| Zoned | Residential |
| Land | Rolling Hills surrounded by Hobby Farms |
| Lake Frontage | 1,800/sf of Frontage on Lake Laura |

This information has been secured from sources we believe to be reliable, but we make no representations or warranties explained or implied as to the accuracy of the information. Buyer must verify the information and bears all risk for any inaccuracies.

