



COMMERCIAL REALTY SOLUTIONS

For Sale
Commercial Office
Building



HOWARD LAKE COMMERCIAL OFFICE BUILDING

Building Size: 2,075/sf (.05 Acres)

610 8th Avenue, Howard Lake, MN 55349

Wayne Elam, Broker
763.229.4982
WElam@Crs-Mn.com

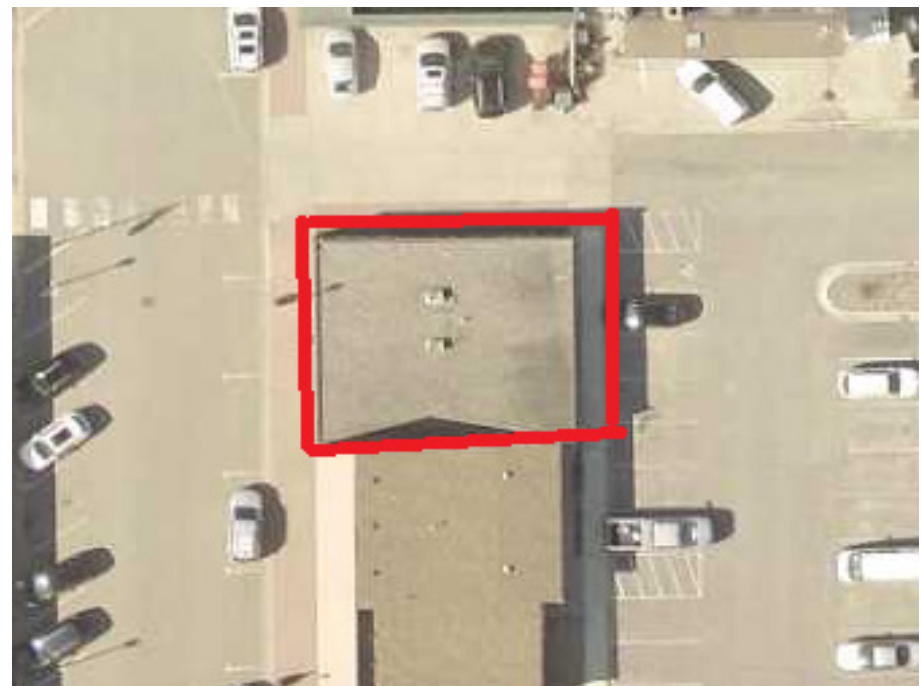


PROPERTY LOCATION

- * Located 1 Block South of Highway 12
- * Great Location with Ample Parking
- * Close to Services
- * Businesses In the Area:
Howard Lake City Hall, Maria's Mexican, USPS,
American Legion, The Broken Bolt, Hardware Hank,
Howard Lake Fire Department, Howard Lake Wine & Spirits
and more...

TRAFFIC COUNTS - 2023

- * Highway 12 - 10,000 VPD
- * 7th Avenue - 3,662 VPD



The information contained herein was obtained from sources believed to be reliable, but Commercial Realty Solutions has not verified nor has any knowledge regarding the accuracy of information and makes no representation or warranty concerning the same. Therefore, Commercial Realty Solutions disclaims all liabilities in connection with any inaccuracies or incompleteness. This marketing material is for the implicit use by Commercial Realty Solutions for the marketing of their listings and is not for use by other brokerage(s).

PROPERTY OVERVIEW

Sales Price
\$229,000.00

Building Size	2,075/sf
Lot Size	.05 Acres
Wright County	PID 109-010-018081
2024 Taxes	\$2,750.00
Zoned	B-2 Downtown Area Business
Year Built	1985
Tenant	Multi-Tenant
Parking	Street Parking Rear of Building - Municipal Lot



This information has been secured from sources we believe to be reliable, but we make no representations or warranties explained or implied as to the accuracy of the information. Buyer must verify the information and bears all risk for any inaccuracies.

BUILDING OVERVIEW



Tenant	Currently 2 Tenant Building (Potential for 1 Tenant)
North Side	Large Reception Area Large Conference Room Large Executive Office Unisex Bathroom Partial Basement
South Side	Large Reception Area Large Conference Room Large Executive Office Unisex Bathroom Full Basement for Storage
Utilities/Features	Utilities are Separated City Sewer/Water Forced Air Heat Central A/C Brick Face
Upgrades	Newer Windows Newer HVAC (North Side)

INTERIOR (South Side)



This information has been secured from sources we believe to be reliable, but we make no representations or warranties explained or implied as to the accuracy of the information. Buyer must verify the information and bears all risk for any inaccuracies.

INTERIOR (South Side Basement)



This information has been secured from sources we believe to be reliable, but we make no representations or warranties explained or implied as to the accuracy of the information. Buyer must verify the information and bears all risk for any inaccuracies.

INTERIOR (North Side)



This information has been secured from sources we believe to be reliable, but we make no representations or warranties explained or implied as to the accuracy of the information. Buyer must verify the information and bears all risk for any inaccuracies.

EXTERIOR



This information has been secured from sources we believe to be reliable, but we make no representations or warranties explained or implied as to the accuracy of the information. Buyer must verify the information and bears all risk for any inaccuracies.