



PROPERTY INFORMATION

* Lease Rate **\$1,100.00/mo.** (includes utilities)

* Building is 16,100/sf

Space Available: Suite 100, 625/sf

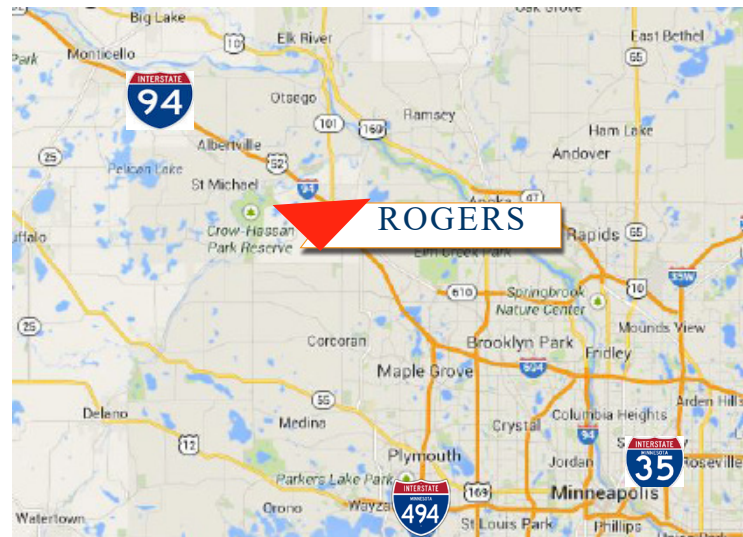
* Built 1987

* Hennepin County

* PID: 23-120-23-13-0036

* Businesses in Area:

US Post Office, Appletime Daycare, Rogers Library,
State Farm Insurance, Vision Staffing Solutions,
Wells Fargo Bank and more.



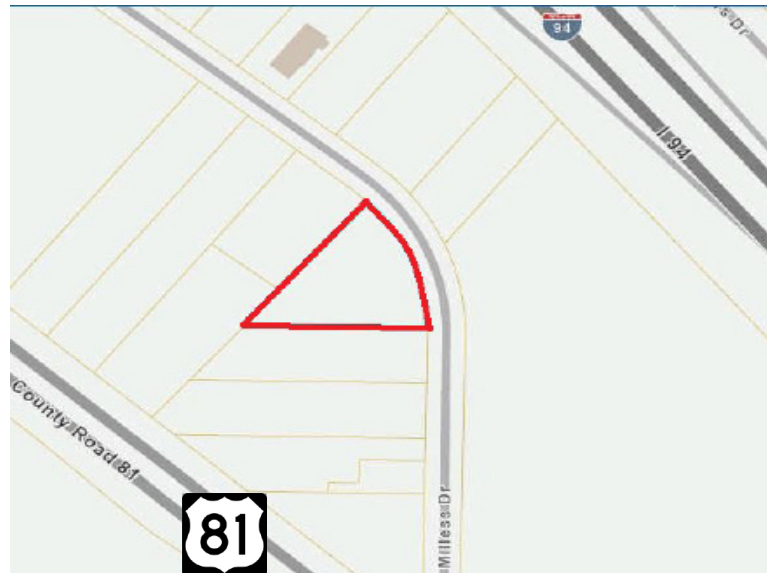
Contact:
SHEILA ZACHMAN
(763) 244-0600
SZachman@crs-mn.com

For Lease Professional Office Building 21151 John Milless Dr - Rogers MN 55374



LOCATION/AREA INFORMATION

- * South of I-94
- * Easy Access to I-94 Freeway
- * Near Many Services and Retail



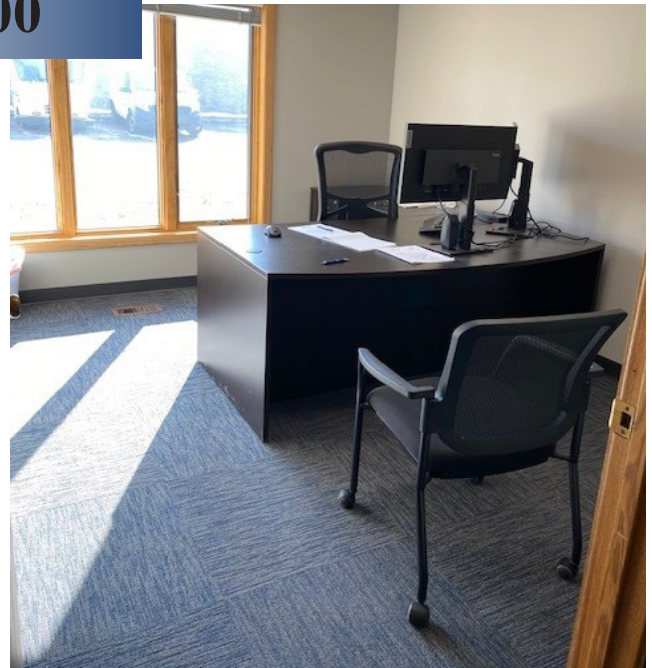
TRAFFIC COUNTS - 2023

- * I-94 - 95,000 VPD
- * County Road 81 - 11,400 VPD
- * John Milless Drive - 2,750 VPD

Contact:
SHEILA ZACHMAN
(763) 244-0600
SZachman@crs-mn.com



Suite 100



PROPERTY INFORMATION

- * Multi-Tenant Building
- * Shared Restroom
- * Shared Entrance
- * Comcast Cable Available

Contact:
SHEILA ZACHMAN
(763) 244-0600
SZachman@crs-mn.com