



COMMERCIAL REALTY SOLUTIONS

For Lease
Industrial/
Office



ST. CLOUD

Multi-Tenant Industrial Flex

Lease Rate: \$8.25/psf NNN

Building: 20,340 Available: 15,920/sf

23823 67th Ave, St. Cloud, MN 56301

Eric O'Brien, Broker
612.281.4163
EObrien@Crs-Mn.com



PROPERTY LOCATION

- * Two (2) Miles South of I-94
- * One (1) Block West of US Hwy 15
- * Businesses in Area Include:
 Gohman Supply, B&F Fastners Supply, Augusta Electrical,
 Oberman Auctions, Casey's C-Store and more.

TRAFFIC COUNTS - 2023

- * US Hwy 15 - 9,500 VPD
- * Cty Rd 47 - 2,950 VPD



The information contained herein was obtained from sources believed to be reliable, but Commercial Realty Solutions has not verified nor has any knowledge regarding the accuracy of information and makes no representation or warranty concerning the same. Therefore, Commercial Realty Solutions disclaims all liabilities in connection with any inaccuracies or incompleteness. This marketing material is for the implicit use by Commercial Realty Solutions for the marketing of their listings and is not for use by other brokerage(s).

PROPERTY OVERVIEW

Lease Rate

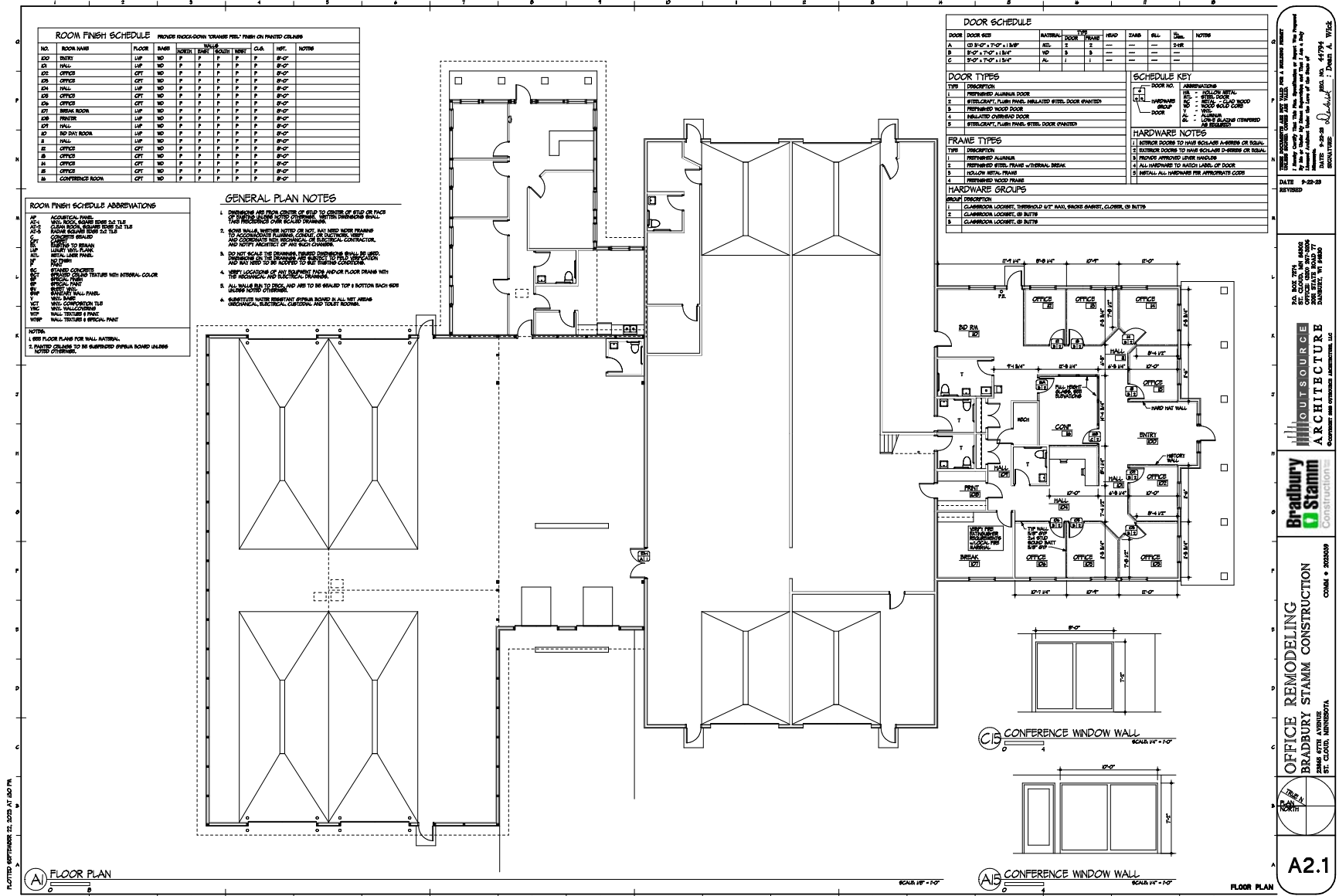
\$8.25/psf NNN

Operating Expense	\$2.90/psf
Building Size	20,340/sf
Space Available	15,920/sf Minimum Divisible - 9,420/sf Flex Up Option #1 - 3,250/sf Flex Up Option #2 - 3,250/sf
Lot Size	3.49 Acres
County	Stearns
PID	81.43180.0313
Taxes 2024	\$26,106.00
Zoning	I-1 Industrial



This information has been secured from sources we believe to be reliable, but we make no representations or warranties explained or implied as to the accuracy of the information. Buyer must verify the information and bears all risk for any inaccuracies.

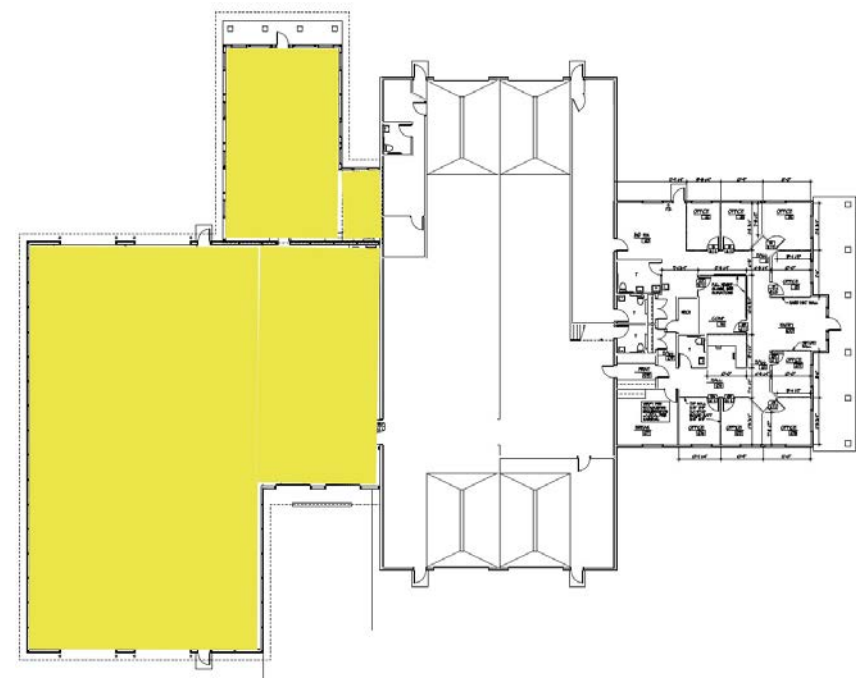
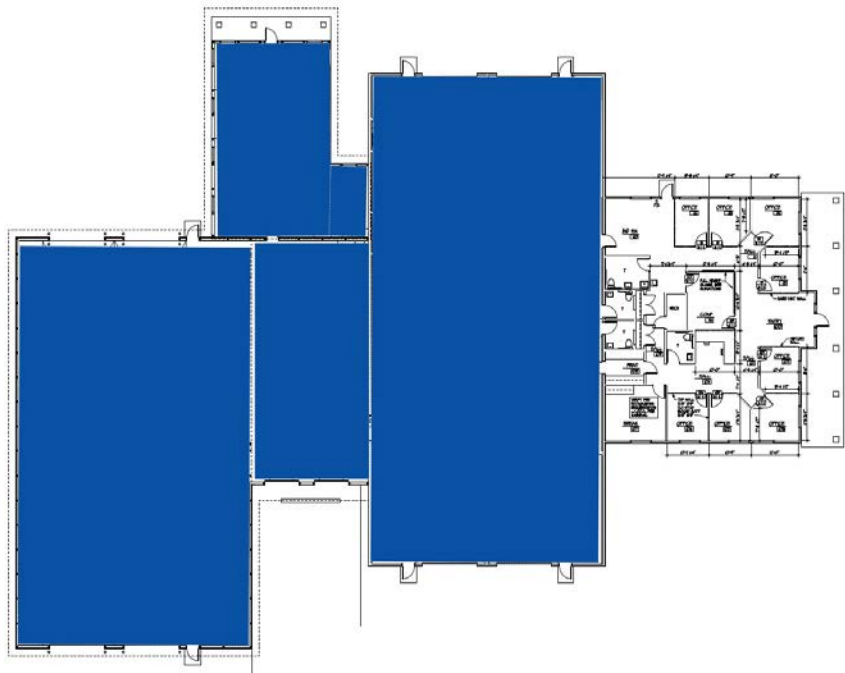
FLOOR PLAN



This information has been secured from sources we believe to be reliable, but we make no representations or warranties explained or implied as to the accuracy of the information. Buyer must verify the information and bears all risk for any inaccuracies.

Industrial/Office | 4

FLOOR PLAN



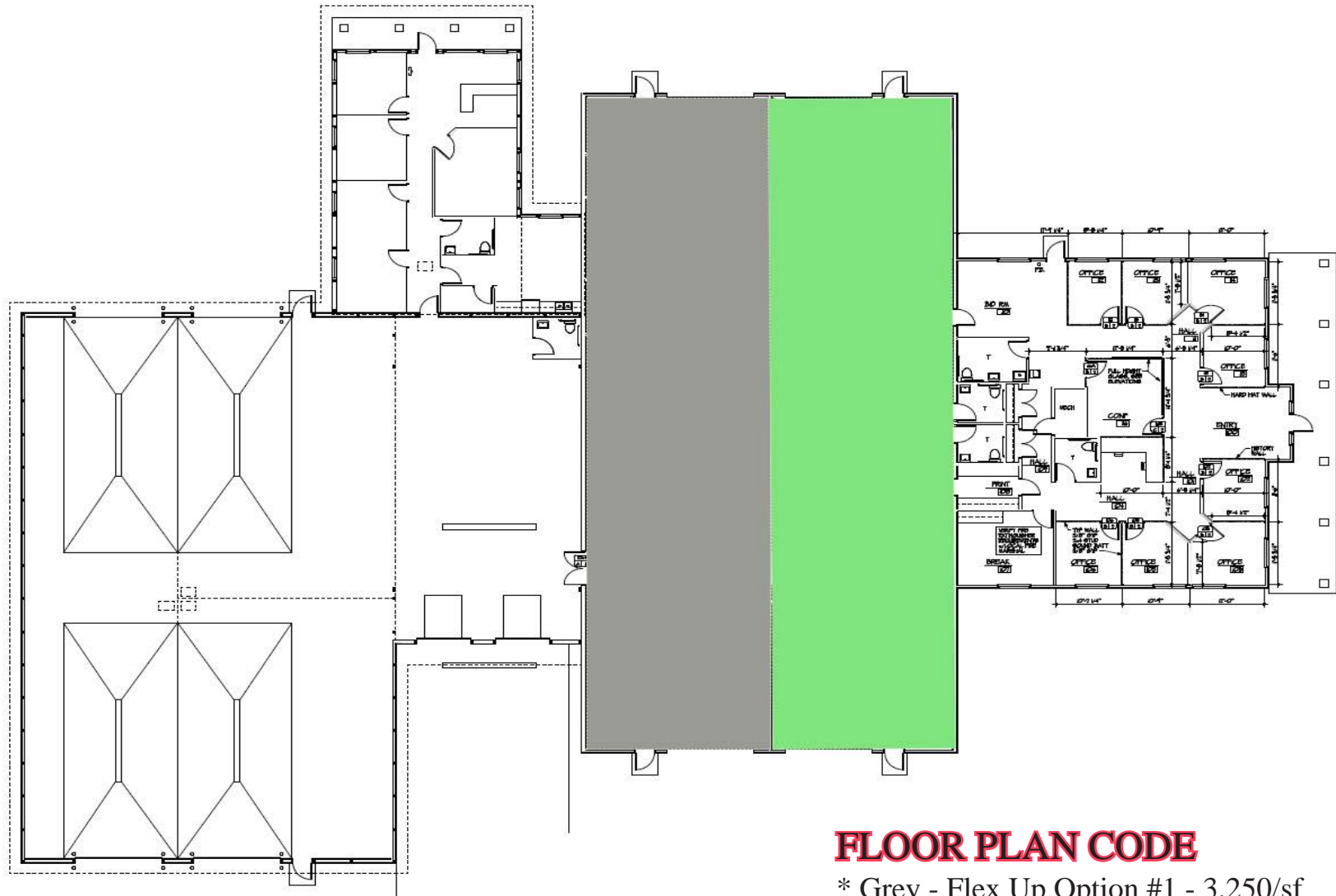
FLOOR PLAN CODE

* Blue - Gross 15,920/sf

* Yellow - Minimum Divisible 9,420/sf

This information has been secured from sources we believe to be reliable, but we make no representations or warranties explained or implied as to the accuracy of the information. Buyer must verify the information and bears all risk for any inaccuracies.

FLOOR PLAN - FLEX OPTIONS



FLOOR PLAN CODE

- * Grey - Flex Up Option #1 - 3,250/sf
- * Green - Flex Up Option #2 - 3,250/sf

This information has been secured from sources we believe to be reliable, but we make no representations or warranties explained or implied as to the accuracy of the information. Buyer must verify the information and bears all risk for any inaccuracies.

BUILDING INFORMATION

Minimum Divisible Space (9,420/sf)

- * Office - Forced Air Furnace
- Warehouse - Reznor Heat
- * (5) Private Offices
- * Conference Room
- * Breakroom
- * (2) Restrooms
- * Shop Floor Drains (with oil separator)
- * (6) Overhead Doors
- * (4) Drive-In Doors: 14' x 14'
- * (2) Dock Doors: 12' x 12'
- * Clear Height: 16'
- * One (1) Floor
- * Built: 2006
- * 40+ Parking Spaces



INTERIOR



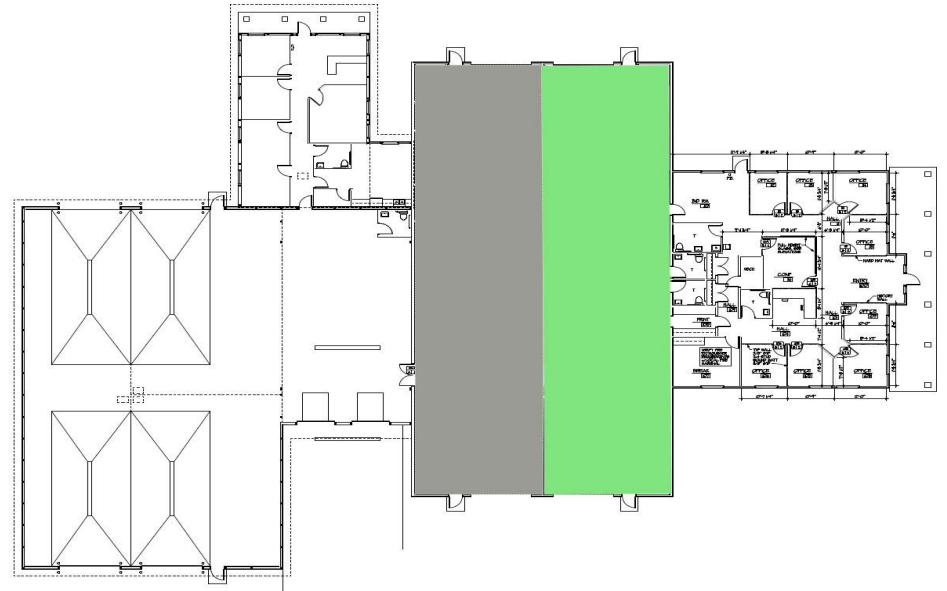
This information has been secured from sources we believe to be reliable, but we make no representations or warranties explained or implied as to the accuracy of the information. Buyer must verify the information and bears all risk for any inaccuracies.

SHOP



This information has been secured from sources we believe to be reliable, but we make no representations or warranties explained or implied as to the accuracy of the information. Buyer must verify the information and bears all risk for any inaccuracies.

ADDITIONAL OPTIONAL SPACE (Grey Floor Plan)



This information has been secured from sources we believe to be reliable, but we make no representations or warranties explained or implied as to the accuracy of the information. Buyer must verify the information and bears all risk for any inaccuracies.

EXTERIOR



PROPERTY INFORMATION

- * Drive In Doors allow for two (2) lanes of truck traffic to drive through the warehouse space.
- * In-floor drain
- * Parking lot recently updated, including upgraded to LED lighting on the exterior.
- * Potential for outdoor storage, including the ability to fence and secure the area.
- * Greenspace is maintained, including in ground sprinkler system.
- * Space is metered separately for utilities and telecommunications.
- * Tenant is responsible for in suite janitorial.

This information has been secured from sources we believe to be reliable, but we make no representations or warranties explained or implied as to the accuracy of the information. Buyer must verify the information and bears all risk for any inaccuracies.

DRONE IMAGE



This information has been secured from sources we believe to be reliable, but we make no representations or warranties explained or implied as to the accuracy of the information. Buyer must verify the information and bears all risk for any inaccuracies.