



COMMERCIAL REALTY SOLUTIONS

Multi-Tenant  
Building



## FORMER HERBERGER'S RETAIL CENTER

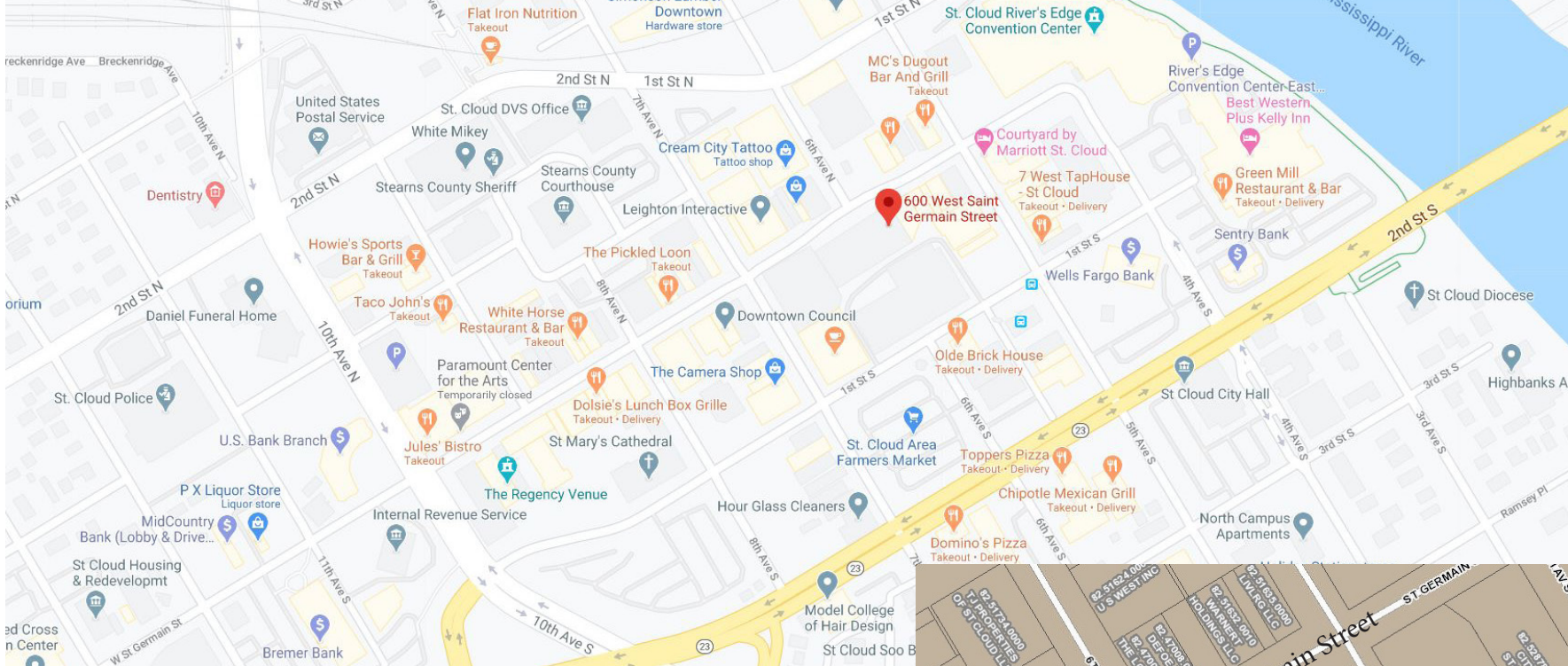
**168,768 total sf** (two floors plus basement, 1.33 acres)

600-660 W Saint Germain St, St. Cloud, MN 56301

Wayne Elam, Broker  
763.229.4982  
WElam@Crs-Mn.com

Eric O'Brien, Agent  
320.406.3910  
EObrien@Crs-Mn.com

The information contained herein was obtained from sources believed to be reliable, but Commercial Realty Solutions has not verified nor has any knowledge regarding the accuracy of information and makes no representation or warranty concerning the same. Therefore, Commercial Realty Solutions disclaims all liabilities in connection with any inaccuracies or incompleteness. This marketing material is for the implicit use by Commercial Realty Solutions for the marketing of their listings and is not for use by other brokerage(s).



## PROPERTY LOCATION

In Historic Downtown St. Cloud

North of Division Street

One Block from River's Edge Convention Center

Adjacent to Multi-Level Public Parking Ramp

Near Courtyard by Marriott Hotel

### TRAFFIC COUNTS - 2023

\* 5th Avenue S - 4,550 VPD

\* W. St. Germain - 3,900 VPD

\* Highway 23/Division St - 33,000 VPD

Former Herberger's Retail Center | 2

The information contained herein was obtained from sources believed to be reliable, but Commercial Realty Solutions has not verified nor has any knowledge regarding the accuracy of information and makes no representation or warranty concerning the same. Therefore, Commercial Realty Solutions disclaims all liabilities in connection with any inaccuracies or incompleteness. This marketing material is for the implicit use by Commercial Realty Solutions for the marketing of their listings and is not for use by other brokerage(s).

# PROPERTY OVERVIEW

Sale Price

\$3,500,000.00

Operating Expense	\$2.80/psf
Building Size	168,768
Land Size	1.33 Acres
County	Stearns
PID's	82.52885.0001/82.52885.0065
Taxes 2024	\$112,604.00 (\$0.67/psf)
Zoned	C-3 Central Business District
Year Built	1985
Lease Rate	\$10.00/psf NNN
Lease in Place	55,571/sf thru August 2028



The information contained herein was obtained from sources believed to be reliable, but Commercial Realty Solutions has not verified nor has any knowledge regarding the accuracy of information and makes no representation or warranty concerning the same. Therefore, Commercial Realty Solutions disclaims all liabilities in connection with any inaccuracies or incompleteness. This marketing material is for the implicit use by Commercial Realty Solutions for the marketing of their listings and is not for use by other brokerage(s).

# PROPERTY HIGHLIGHTS

## Tenant: Midland Credit Management (Encore)

Lease Term: July 31, 2028

Net Operating Income (2023): \$229,590

## 168,768 Square Feet

55,697 sf Second Floor

55,697 sf Ground Floor

55,697 sf Lower Level

## Downtown Core Business District

Well-positioned on corner of 7th  
Avenue N. and W. St. Germain Street  
Population 196,400

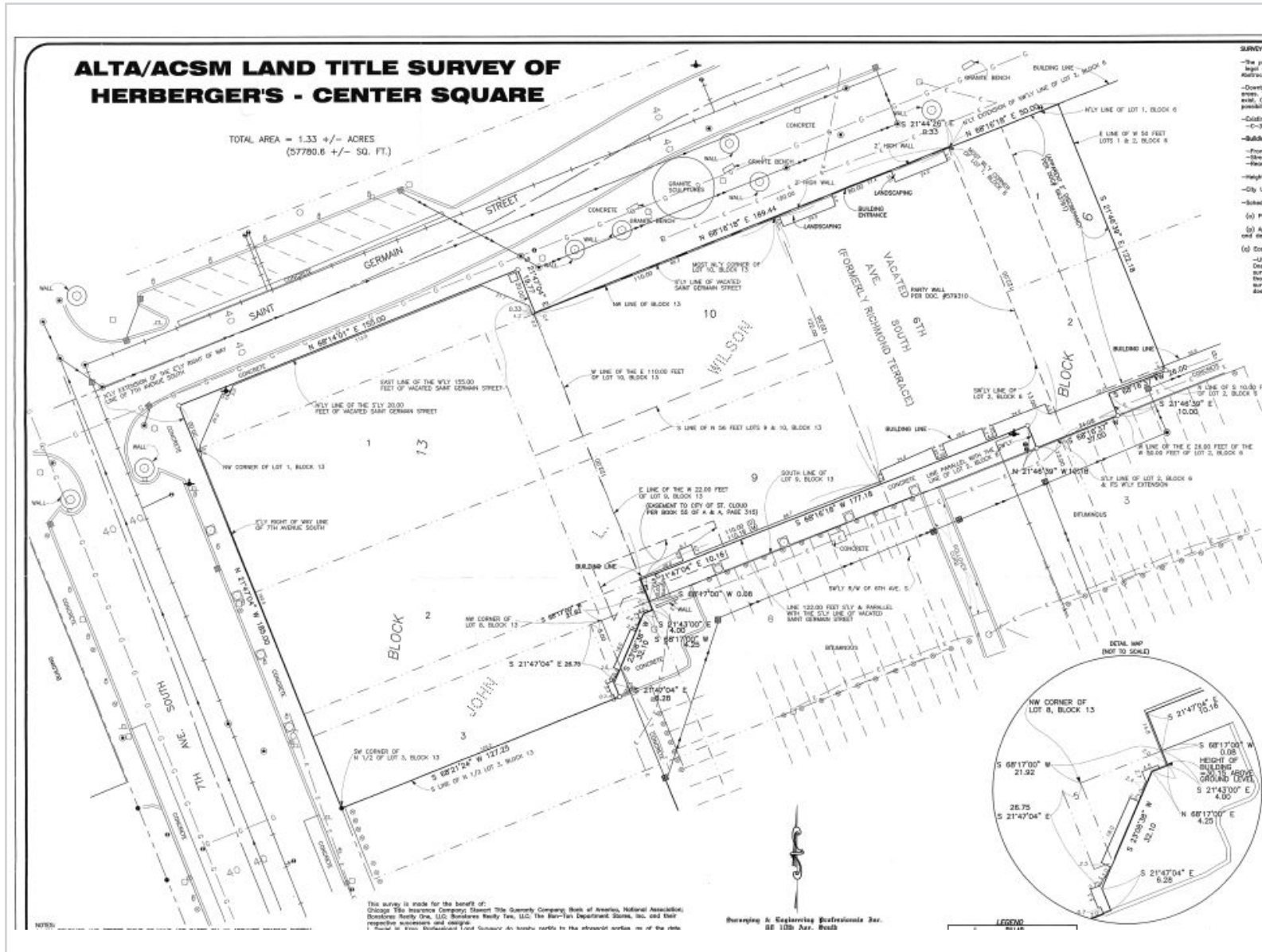
- Force Air Furnace & A/C
- Two (2) Elevators: Major Upgrades Completed in 2023
- Electrical: 280v
- Interior Sprinkler: Yes
- Clear Height: 10'
- Multi-Tenant Building - Formerly Herberger's Building in downtown
- Parking Spaces: Parking Garage Adjacent to Building



Former Herberger's Retail Center | 4

# SURVEY

Additional site plan/floor plans available upon request.



The information contained herein was obtained from sources believed to be reliable, but Commercial Realty Solutions has not verified nor has any knowledge regarding the accuracy of information and makes no representation or warranty concerning the same. Therefore, Commercial Realty Solutions disclaims all liabilities in connection with any inaccuracies or incompleteness. This marketing material is for the implicit use by Commercial Realty Solutions for the marketing of their listings and is not for use by other brokerage(s).

# INTERIOR - Current Tenant



# INTERIOR - Current Tenant



Cubicle Furniture from Previous Tenant.



# INTERIOR - Former Herberger's Space





# INTERIOR - Former Herberger's Space



# INTERIOR - Former Herberger's Space



# EXTERIOR



Former Herberger's Retail Center | 11

The information contained herein was obtained from sources believed to be reliable, but Commercial Realty Solutions has not verified nor has any knowledge regarding the accuracy of information and makes no representation or warranty concerning the same. Therefore, Commercial Realty Solutions disclaims all liabilities in connection with any inaccuracies or incompleteness. This marketing material is for the implicit use by Commercial Realty Solutions for the marketing of their listings and is not for use by other brokerage(s).