



COMMERCIAL REALTY SOLUTIONS  
www.commrealtysolutions.com

# Waverly - Full Service Restaurant FOR SALE

101 Summerfield, Waverly, MN 55390

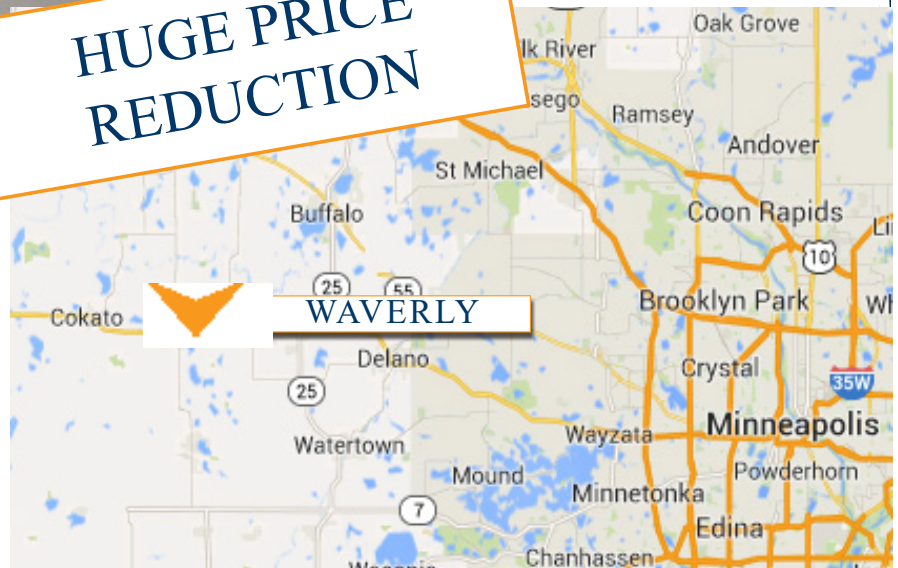
(Highway 12)

Occupancy Appx. 315

## Highway Visibility and Access!



HUGE PRICE  
REDUCTION



### PROPERTY INFORMATION

\* Sales Price \$795,000.00

**\$449,000.00**

- \* Lot is 1.05 Acres
- \* Building is 6,508/sf
- \* Wright County PID 116-013-002010
- \* 2019 Taxes \$20,036.00
- \* Zoned: Commercial Highway Bs. Dist.
- \* Business closed in December 2014
- \* All FFE, Name & Other Aspects are part of the sale (\*)
- \* Excellent Highway Visibility & Easy Access

(\*Upon request a list of FFE included will be supplied!  
Some items are Vendor leased.)

**Contact:**  
**WAYNE ELAM**  
**(763) 229-4982**

WElam@commrealtysolutions.com

3 Highway 55 West, Buffalo, MN 55313

office 763 682 2400 fax 763 682 4524

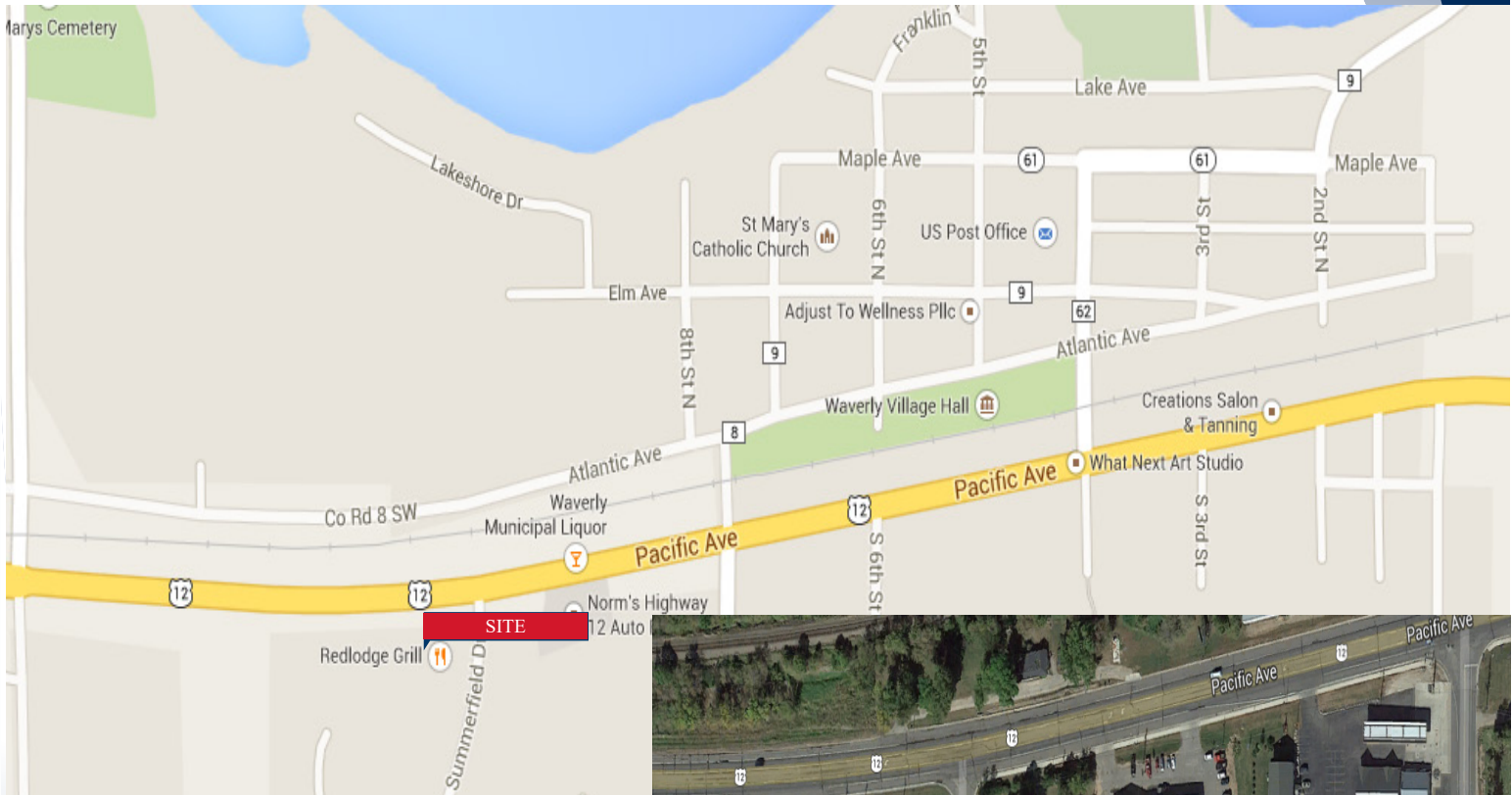
www.commrealtysolutions.com

## Waverly - Full Service Restaurant

# FOR SALE

101 Summerfield, Waverly, MN 55390

**Excellent  
Highway Visibility  
and Access!**

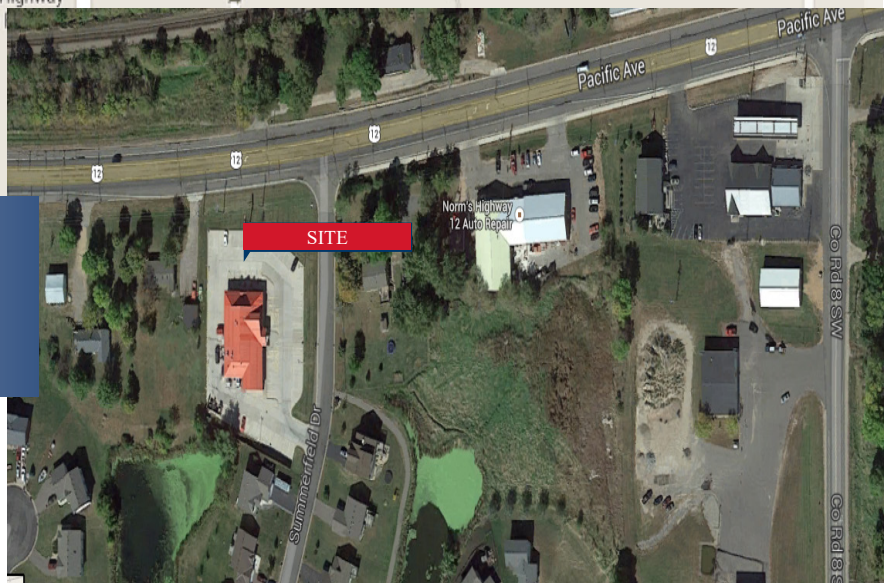


### TRAFFIC COUNTS - 2018

- \* Highway 12 - 9,700 VPD
- \* County Road 8 - 2,550 VPD

### PROPERTY INFORMATION

- \* Highway Visibility / Easy Access
- \* 29 Miles from I-494
- \* Great location!



**Contact:**

**WAYNE ELAM**

**(763) 229-4982**

**WElam@commrealtysolutions.com**



3 Highway 55 West, Buffalo, MN 55313

office 763 682 2400 fax 763 682 4524

[www.commrealtysolutions.com](http://www.commrealtysolutions.com)



## Waverly - Full Service Restaurant

# FOR SALE

101 Summerfield, Waverly, MN 55390

Bar / Dining Area Also  
Has a Stage for  
Entertainment!

Occupancy Appx. 315



Front Reception Area

\*Upon request a list of FFE included  
will be supplied! Some items are Vendor  
leased.



3 Highway 55 West, Buffalo, MN 55313

office 763 682 2400 fax 763 682 4524

www.commrealtysolutions.com

Contact:

**WAYNE ELAM**

**(763) 229-4982**

**WElam@commrealtysolutions.com**



Waverly - Full Service Restaurant

# FOR SALE

101 Summerfield, Waverly, MN 55390

**\*All FFE  
Included!**



**\*Upon request a list of FFE included  
will be supplied! Some items are Vendor  
leased.**

**Contact:  
WAYNE ELAM  
(763) 229-4982**

**WElam@commrealtysolutions.com**



3 Highway 55 West, Buffalo, MN 55313

office 763 682 2400 fax 763 682 4524

[www.commrealtysolutions.com](http://www.commrealtysolutions.com)



## Waverly - Full Service Restaurant

# FOR SALE

101 Summerfield, Waverly, MN 55390

Back Dining Area  
AND Private Dining  
Room!



2nd Floor Office / Storage Room

Contact:

**WAYNE ELAM**

**(763) 229-4982**

**WElam@commrealtysolutions.com**

\*Upon request a list of FFE included will be supplied! Some items are Vendor leased.



3 Highway 55 West, Buffalo, MN 55313

office 763 682 2400 fax 763 682 4524

[www.commrealtysolutions.com](http://www.commrealtysolutions.com)

**Waverly - Full Service Restaurant**

**FOR SALE**

**101 Summerfield, Waverly, MN 55390**

**Ample  
Parking!**



**PROPERTY INFORMATION**

- \* Rustic Lodge style building
- \* Red Metal Roof
- \* Beer Cooler in Basement
- \* 60+ Parking Spaces and 3 Handicap Spaces
- \* Businesses in the area include: Citizen's Bank, Tesoro, Convenience Store, Auto Repair Facility, City Hall, and more!

\*Upon request a list of FFE included will be supplied! Some items are Vendor leased.

**Contact:  
WAYNE ELAM  
(763) 229-4982**

**WElam@commrealtysolutions.com**



**3 Highway 55 West, Buffalo, MN 55313**

**office 763 682 2400**

**fax 763 682 4524**

**www.commrealtysolutions.com**